

INCE
PTIO

IMPLEMENTATION OF MKSP IN POTTANGI & SEMILIGUDA BLOCKS OF KORAPUT

IMPLEMENTATION OF MKSP PROJECT IN
POTTANGI AND SEMILIGUDA BLOCKS OF
KORAPUT DISTRICT-ODISHA

**Project Implementing Agency-:
Life Academy of Vocational Studies
(LAVS)**



INITIAL INCEPTION REPORT

A. Organization (PIA)Detail :

Life Academy of Vocational Studies (LAVS) is registered NGO in the state of Odisha. Founded by a group of young professionals the organization has completed over two decades of existence thanks to its commitment to quality, accountability and social cause it upholds in all its operations. It now operates in twenty-five districts of the state including tribal districts like Koraput, Kalahandi, Nawarangpur, Jharsuguda and Deogarh. It has also worked in coastal districts like Khurda, Kendrapara, Jagatsinghpur, Jajpur, Bhadrak, Balasore and Cuttack. The principal target groups of LAVS include children, women, STs, SCs, farmers, artisans and other weaker sections of society.

By virtue of long and diversified professional exposure, the organization is able to deliver value added services to a wide range of projects supported by clients including World Bank, DFID, UNDP, UNICEF, UNFPA, IFAD, ADB, State and Central Govt. Departments and Ministries. Thematically, it has core competence in areas of Community Health, Education, Child Development, Sustainable Livelihoods and Good Governance. LAVS has been taking up watershed development and rural livelihoods initiatives in a big way.

LAVS with its team of qualified, experienced and committed professionals has requisite expertise for undertaking social sector assignments that promote and sustain the culture of result based management in critical segments of social engineering and institutional sustainability. The wide spectrum of social advisory services includes studies, research, evaluations, planning, innovation and project implementation with defined mechanisms for change management in the framework of inclusive and sustainable development.

Sustainable Farm Livelihood interventions at the community level facilitated by LAVS are: capacity building and hands-on support to small and marginal farmers for piloting and experimentation on sustainable livelihood models; experiential blending of traditional, organic and low-input farm practices; promotion of farmers' groups/federations, community farming and grain bank under integrated watershed regime. Network level interventions include: capacity building and hands on support to intermediaries for promotion of sustainable agriculture models; and identification and demonstration of best practices for replication by others.

Sustainable Non-Farm Livelihood activities at the community level facilitated by LAVS are: expansion of the self-help process; skill building support for promotion of micro-enterprises; networking with different institutions for financing, skill building, marketing and trade promotion. Such activities at Network level include: capacity building support to federations; financial inclusion drives and development of learning kits/manuals/training aids/IEC programmes and packages on self-help/micro-entrepreneurship. It has fair degree of exposure and experience in promoting producer clusters and producer companies in the state.

**IMPLEMENTATION OF MKSP IN POTTANGI & SEMILIGUDA BLOCKS OF KORAPUT
DISTRICT-ODISHA**

INCEPTION REPORT

GENERAL PROFILE OF THE ORGANIZATION

- 1. Name:** Life Academy of Vocational Studies (LAVS)
- 2. Address:** 17, AV Complex, Gadakana, P.O.: Mancheswar Railway Colony, Bhubaneswar
751017, Odisha, Tel.: 0674 2117475
- 3. Email:** lavsorissa@gmail.com ; lavsorissa@rediffmail.com
- 4. Tel:** +91-(0)674-2117475
- 5. Fax:** +91-(0)674-2117475
- 6. Chief Executive:** Akshaya Mahapatra, President cum Chief Executive, LAVS
- 7. Contact Person:** Mr. Nashir Ali, Executive Director, LAVS (Cell Phne-+91-9437091725,
Email- lavsodisha@gmail.com)
- 8. Year of Establishment:** 1991 (In active operation since last twenty-two years)

9. Registration Details –

Registered under Societies Registration Act -XXI of 1860 No-3710-384/91, Dated-28.11.91
--

Registered under FCR Act 1976 bearing No-104830015 Dated-22.01.99

Registered under 12 (A) of I.T. Act

Registered under donation deduction Act 80 (G) of the IT Act 1961 Dated. 18.06.03.

Income Tax PAN Number AAATL 3043 L

Registered u/s 69 of Finance Act 1994 - Service Tax Registration No. AAATL3043 L ST 001
--

TAN No. BBNL00375E

Registered with National Commission, Income Tax Department for exemption under 35 AC of Indian IT Act
--

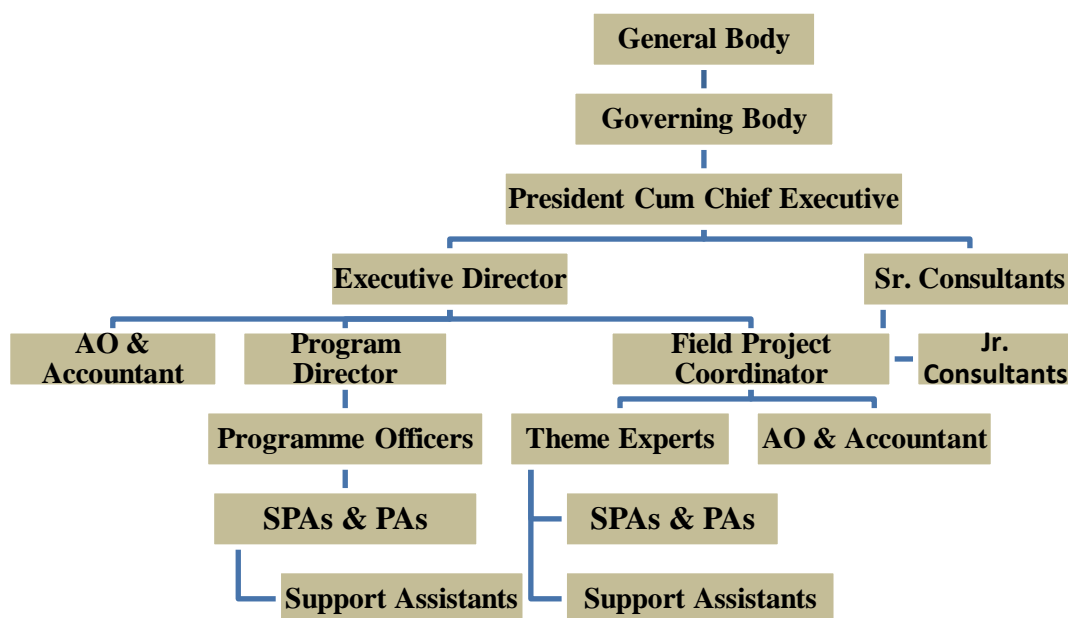
LAVS has Accredited status with the UNCCD, Germany
--

LAVS is Accredited with Credibility Alliance, India

**IMPLEMENTATION OF MKSP IN POTTANGI & SEMILIGUDA BLOCKS OF KORAPUT
DISTRICT-ODISHA**

INCEPTION REPORT

ORGANOGRAM



Human Resource

Sl No	Category	Number	
		Full Time	Part Time
1	Senior Professionals	14	23
2	Subject Matter Specialists	06	18
3	Middle Managers	11	00
	Junior Managers	26	00
4	Animators and Volunteers	86	115
5	Support Staff	14	03

Branch Office Address

Koraput	At: Badagan, P.O.: Pottangi, Dist.: Koraput Odisha 764039, Tel.: +91-6853-252501, E-mail: lavs_kpt@rediffmail.com
Jharsuguda	505/6184 Mauli Nagar, P.O.: Industrial Estate, Dist.: Jharsuguda Odisha 768003, Tel: +91-6645-214278, E-mail: lavs_jhsd@rediffmail.com
Cuttack	Chuna Factory Area, At/P.O.: Khuntuni, P.O.: Cuttack 759001, E-mail: lavs_ctc@rediffmail.com

**IMPLEMENTATION OF MKSP IN POTTANGI & SEMILIGUDA BLOCKS OF KORAPUT
DISTRICT-ODISHA**

INCEPTION REPORT

Jagatsinghpur	At: Damodarpatna, P.O.: Dainlo, Dist.: Jagatsinghpur, Odisha 754137
Kalahandi	At: Paradeshipada, P.O.: Bhawanipatna, Dist: Kalahandi Odisha 766001

B. Executive summary of the project/ Brief description of the project

The project seeks to promote sustainable agriculture practices under Mahila Kissan Sashaktikaran Pariyojna (MKSP) in Potangi and Semiliguda Blocks of Koraput District, Odisha. Besides, it shall contribute for improved health and nutritional security, reduction of drudgery of women agriculture workforce and empowerment of women farmers. It will benefit 3000 direct beneficiaries through a network of community based platforms like SHGs, Producer Groups, Federations and Marketing Societies. The tribal socio-economic system is linked to land and forest. Their culture as well as livelihood support system is closely linked with these dominant livelihoods supportive systems.

The greatest advantage of the project lies in its attempt to develop and tap social capital in deepening development outreach and effectiveness for women. The attempt is bound to succeed since women are being targeted as catalysts. The projected success has far reaching consequences in terms of transcending gender relations. Enhanced social solidarity, unity of purpose, trusted leadership, widespread linkage, varied exposure and external facilitation will go a long way in revitalizing community institutions and initiatives

Increased access to income through remunerative female work participation shall kick start a chain of results by way of improved self esteem, well being and human development investments. As an important offshoot of the project, one may witness a sharp fall in distress migration and vulnerability to alien influences including naxalism

The project shall be implemented in compliance with the non negotiable principles of NRLM:- These include; Focus on the poor, Focus on women, Adherence to protocols on sustainable agriculture. Food security and, social security of communities should be given highest priority in allocating resources, Universal social inclusion and universal social mobilization in a time bound manner, Transparent and participatory identification of poor, Federations of institutions of the poor as ‘force multipliers’ and as ‘sensitive support structures’ to promote and nurture S.H.Gs. Institutions of the poor transform into institutions for the poor, Managerial and financial self reliance of the institutions of the poor, Participation of the poor, particularly the poorest, in all decisions that affect them and their institutions, Development and continuous capacity building of large pool of social capital at village/block level- community leaders, community professionals and community resource persons, Ensuring primary sector livelihoods of the poor are viable and sustainable – eco friendly, based on local resources (to the maximum extent), and climate change resilient, Building capacities of the institutions of the poor to manage livelihoods value chains on their own.

1. Objectives :

**IMPLEMENTATION OF MKSP IN POTTANGI & SEMILIGUDA BLOCKS OF KORAPUT
DISTRICT-ODISHA**

INCEPTION REPORT

- To develop a sustainable model for livelihood promotion of the women farmers/ agriculture workers
- To ensure a better control of the institutions of the poor women farmers/ agriculture workers over value chain
- To promote regeneration of engendered species to improve the bio diversity and enhance productivity
- To build the capacity of the community in modern harvesting and post harvesting techniques to increase their income
- To develop market linkages for produce
- To develop a pool of community resource persons to enable the community institutions to manage their activities
- To enable women to have better access to their entitlements and services of the government and other agencies
- Promote food and livelihood security for the women and poor households
- Expand income and employment opportunities for women through vocational training and support services
- Ensure transparent and efficient implementation of Government and Donor Supported Poverty Alleviation Schemes through substantive PRI and community participation.
- Create eco-friendly alternative livelihood options reducing over dependence on exploitation of available natural resources.
- Facilitate community access to health, educational and other promotional activities

2. Tasks

- Block, GP and Village level Project Induction Meetings
- Establishment of strong interface with administration, line departments, PRIs, CBOs and field NGOs
- Preparation of situation analysis and stakeholder analysis reports
- Start up activities-Health, Nutrition, Education, Water and Sanitation
- Formation and strengthening of SHGs, Federations, Farmer associations, Eco clubs and Community based forest management committees
- Participatory Livelihood opportunity analysis and micro planning exercises (Village/ cluster)
- Preparation of village/ cluster specific integrated and comprehensive micro plans for income and quality of life enhancement activities
- Engagement of female community facilitators
- Preparation of training material for orientation and training of key stakeholders

**IMPLEMENTATION OF MKSP IN POTTANGI & SEMILIGUDA BLOCKS OF KORAPUT
DISTRICT-ODISHA**

INCEPTION REPORT

- Training, Exposure and Extension Education
- Community mobilization on relevant Acts / rules/ laws
- Training of Key stakeholders/ SHGs
- Vocational training and Micro enterprise promotion with special emphasis on women- led enterprises.
- Technology Dissemination
- Business Development Support/ Bank-FI Linkage
- Infrastructure support for market-based interventions and marketing of NTFP
- Multi-stakeholder partnerships and interface for sharing/ up-scaling best practices and convergence and coordination.
- Legal literacy campaigns to aware community about rights and entitlements under official programmes and schemes
- Mobilization of forest dependents into groups and networks for assertion of rights to access and control local resources and trading
- Diagnostic study for Strengthening SHG and Income Generation Activities
- Strengthening linkage and interface of PRIs and CBOs with resource and technical agencies
- Facilitate effective participation of women in particular and other stakeholders in planning and implementation of equitable and sustainable village development plans
- Promotion of kitchen and nutritional gardens
- Promotion of food and nutrition security
- Promotional activities in health and education
- Document field processes and submit comprehensive monitoring report

Key Strategies and Activities

1. Block, GP and Village level Project Induction Meetings
2. Establishment of strong interface with administration, line departments, PRIs, CBOs and field NGOs
3. Preparation of situation analysis and stakeholder analysis reports
4. Start up activities-Health, Nutrition, Education, Water and Sanitation
5. Formation and strengthening of SHGs, Federations, Farmer associations, Eco clubs and Community based forest management committees
6. Participatory Livelihood opportunity analysis and micro planning exercises (Village/ cluster)

**IMPLEMENTATION OF MKSP IN POTTANGI & SEMILIGUDA BLOCKS OF KORAPUT
DISTRICT-ODISHA**

INCEPTION REPORT

7. Preparation of village/ cluster specific integrated and comprehensive micro plans for income and quality of life enhancement activities
8. Engagement of female community facilitators
9. Preparation of training material for orientation and training of key stakeholders
10. Training, Exposure and Extension Education
11. Community mobilization on relevant Acts / rules/ laws
12. Training of Key stakeholders/ SHGs
13. Vocational training and Micro enterprise promotion with special emphasis on women-led enterprises.
14. Technology Dissemination
15. Business Development Support/ Bank-FI Linkage
16. Infrastructure support for market-based interventions and marketing of NTFP
17. Multi-stakeholder partnerships and interface for sharing/ up-scaling best practices and convergence and coordination.
18. Legal literacy campaigns to aware community about rights and entitlements under official programmes and schemes
19. Mobilization of forest dependents into groups and networks for assertion of rights to access and control local resources and trading
20. Diagnostic study for Strengthening SHG and Income Generation Activities
21. Strengthening linkage and interface of PRIs and CBOs with resource and technical agencies
22. Facilitate effective participation of women in particular and other stakeholders in planning and implementation of equitable and sustainable village development plans
23. Promotion of kitchen and nutritional gardens
24. Promotion of food and nutrition security
25. Promotional activities in health and education
26. Document field processes and submit comprehensive monitoring report
27. Organize experience sharing workshops

3. Output :

- a) 30 % increase in the incomes of women in agriculture;
- b) 70 % of women in agriculture and their families have adequate food and nutritional security;
- c) 20 % Increase in area under cultivation, cropping intensity and food production by women;
- d) 60% women in agriculture have increased levels of skills and performance;

**IMPLEMENTATION OF MKSP IN POTTANGI & SEMILIGUDA BLOCKS OF KORAPUT
DISTRICT-ODISHA**

INCEPTION REPORT

- e) 45 % of women in agriculture have increased access to productive land, inputs, credit, technology and information;
- f) 70 % women in agriculture freed from drudgery through use of gender friendly tools / technologies;
- g) 90 % Mahila kisans have increased access to market and market information for better marketing of their products;
- h) 60 % of arable land has soil health and fertility to sustain agriculture based livelihoods;
- i) Increased visibility of women in agriculture as an interest group – in terms of increased number of women institutions and increase in their entrepreneurship.
- j) As a result of the interventions, the quality of food production shall increase resulting in enhanced food security, nutrition security and enhanced quality of life as a whole. In line with the MDGs spelled out, it will help in reduction of Infant mortality and maternal mortality.
- k. Active and direct participation of women in the main livelihoods activities i.e. agriculture ensure a greater attention to household welfare in comparison to their male coun

C. Activities undertaken so far :

- Block, GP and Village level Project Induction Meetings organized
- Interface with administration, line departments, PRIs, CBOs and field NGOs established
- Selection and orientation of implementation staff
- Selection of CRPS/PRPs
- Profiling of Mahila Kishans
- Baseline Survey initiated
- Demonstration activities for current Kharif Season

1. Approval Date : 28.02.2013

2. MoU Date : 19 .03.2013

3. Sanction Date : 08.03.2013

Output:

- Implementation Staff in place
- Staff and consultants oriented on project, goal, objectives, approaches and strategies
- PRI members, District Level Officers and Block Level Officers sensitized on trade offs and convergence issues with special reference to MGNREGS and other flagship programmes
- CRPs and PRPs identified
- Baseline survey under progress
- Database of 750 Mahila Kishans created and under progress

**IMPLEMENTATION OF MKSP IN POTTANGI & SEMILIGUDA BLOCKS OF KORAPUT
DISTRICT-ODISHA**

INCEPTION REPORT

- Two crop demonstration on maize, and SRI conducted at field level
- Preparation of DPR under progress

D. Activity Schedule (Gantt Chart)

Activity	M1	M2	M3	M4	M5	M6	M7	M8	M9	M10	M11	M12
Deployment of Staff												
Orientation & training of staff on MKSP												
District level workshop on project objectives and strategy												
Block level workshops on project objectives and strategy												
Finalization of clusters / villages												
Identification of SHG members												
Baseline survey												
Mahila Kisan profiling												
DPR Preparation												
Technical protocols documentation												
Value-chain Studies												
Livelihood opportunity Studies												
Training module development : Print												
Training module development : audio-visual												
Procurement of training equipment & material (Flex posters, Cards,												

**IMPLEMENTATION OF MKSP IN POTTANGI & SEMILIGUDA BLOCKS OF KORAPUT
DISTRICT-ODISHA**

INCEPTION REPORT

Drawing Sheets, markers etc)												
Training to CRPs												
Trainings to para-professionals												
Training to Community members												
Training to leaders & PRI representatives												
Exposure visits of CRPs to Best Practices												
Exposure visit of para-professional to Best Practices												
Exposure visit of Producer group/ federation/ marketing society leaders												
Training to producer group leaders												
Training to producer federation and marketing society leaders												
Demonstration plots for sustainable agriculture Protocols and practices												
Construction of vermin compost pits												
Distribution of small implements for drudgery reduction of Mahila Kisans												
Inputs to the mahila kisan (grant/subsidy/full loan)												

**IMPLEMENTATION OF MKSP IN POTTANGI & SEMILIGUDA BLOCKS OF KORAPUT
DISTRICT-ODISHA**

INCEPTION REPORT

Inputs to producer groups/ federation (grant/subsidy/full loan)												
Operational Fund of Producer federation												
Operational Fund of Marketing Society												
Evaluation/ Impact Assessment studies												
Public information disclosure												
Social Audit												

D.1 Description of each activity (1-2 sentences)

District level workshop on project objectives and strategy

The objective is to sensitize key stakeholders as well as district level officials especially those representing line departments that shall be targeted for convergence and technical assistance during implementation of the project. Objectives of MKSP and key results of the project shall be shared defining the scope for integration and collaboration.

Block level workshops on project objectives and strategy

The objective is to sensitize key stakeholders as well as block level officials especially those representing line departments that shall be targeted for convergence and technical assistance during implementation of the project. Objectives of MKSP and key results of the project shall be shared defining the scope for integration and collaboration.

Baseline survey

Baseline survey is conducted to map the status of Mahila Kisans in reference to socio-economic background, age, education, skills, occupation, institutional membership, income, land ownership, potential for IG activities etc. Besides, village resource mapping is done through a separate tool to identify potential and opportunities to introduce and scale up IG activities under the framework of sustainable agriculture.

Mahila Kisan profiling

Detail profile of targeted Mahila Kisan is prepared to determine the scope of targeted interventions. This will be also a reference for end line evaluation besides mid- term impact assessment exercises.

DPR Preparation

**IMPLEMENTATION OF MKSP IN POTTANGI & SEMILIGUDA BLOCKS OF KORAPUT
DISTRICT-ODISHA**

INCEPTION REPORT

Detailed project report is to be prepared in reference to project objectives, tasks, outputs along the stipulated timeframes. The DPR shall be based on the model template developed and circulated to the PIAs.

Technical protocols documentation

The technical protocols on sustainable agriculture shall be customized in reference to the local context. Four protocol booklets shall be developed in Odia language for wider dissemination.

Value-chain Studies

The proposed value chain studies shall be undertaken on specific items under farm, off farm and NTFP sectors. These studies shall build on the findings of similar studies focussing on the applications of solutions to the PIA's MKSP operational area. Such knowledge management inputs are expected to drive consolidation and convergence with an aim to maximise gains for the mahila kisans.

Livelihood opportunity Studies

Livelihood opportunity analysis is crucial for cluster development. It will build upon baseline data and prepare business development plans of different producer clusters.

Training module development: Print

Six sets of training modules shall be developed: 1. Technical Protocols of Sustainable Agriculture, 2. SHG and Federation Management, NTFP collection, processing, storage and marketing, 4. Livestock management, 5. Horticulture crops, 6. Business Development Plan

Training module development: audio-visual

Three training modules shall be developed in this segment documenting best practices and innovations both actual and potential in reference to MKSP space. This will facilitate effective communication with illiterates and scaled up dissemination processes among target groups.

Procurement of training equipment & material -Flex posters, Cards, Drawing Sheets, markers

Purchases shall be made in bulk to get benefit of scale based on the training requirement. The content for flex posters and cards shall be developed by the experts and consultants of LAVS working for this project.

Training and extension to CRP

Need based training shall be imparted to CRPs based on customized modules adapted and developed for the purpose. They shall be provided exposure on exemplary work being done by counterparts in similar projects within or outside the district.

Trainings and extension to para-professionals

Need based training shall be imparted to para professionals based on customized modules adapted and developed for the purpose. They shall be provided exposure on exemplary work being done by counterparts in similar projects within or outside the district.

**IMPLEMENTATION OF MKSP IN POTTANGI & SEMILIGUDA BLOCKS OF KORAPUT
DISTRICT-ODISHA**

INCEPTION REPORT

Training to Community members

Lead farmers and business leaders from among Mahila Kisans shall be trained and facilitated to be the catalyst in the change and transformation processes

Training to leaders & PRI representatives

PRI representatives shall be sensitized about Women issues and MKSP. Additional resources shall be mobilized from other schemes with the facilitation of PRIs for convergence with MKSP

Training to producer group leaders/ Training to producer federation and marketing society leaders

Need based training shall be imparted to strategically position producer group/ federation/ marketing society leaders as catalysts for accelerating production and marketing activities.

Demonstration plots for sustainable agriculture Protocols and practices

LAVS shall demonstrate sustainable agriculture protocols in four crops during the current year. The demonstration shall be used for orientation of CRPs, PRPs and select lead women farmers.

Construction of vermin compost Pits

There is dearth of organic manure so essential to supplement sustainable agriculture operations. The shortfall shall be partly made good by spreading a chain of vermin compost units at strategically locations within the project area.

Distribution of small implements for drudgery reduction of Mahila Kisans

The list of items shall be finalized as per baseline findings. Transparent procurement & distribution shall be ensured leverage grants and subsidies under available schemes. The objective is to reduce the drudgery of Mahila Kisans through such tools and implements besides increasing their work efficiency and output.

Inputs to the mahila kisan (grant/subsidy/full loan)

As shown in the proposal income generation shall be the key target for the project. Assistance in the form of capital, tools, technologies and extension services shall be made available to the mahila kisans through multiple sources including NRLM.

Inputs to producer groups/ federation (grant/subsidy/full loan)

As shown in the proposal income generation shall be the key target for the project. Assistance in the form of capital, tools, technologies and extension services shall be made available to the producer groups/ federation through multiple sources including NRLM.

Operational Fund of Producer federation

The support shall cover operation cost for three years and other costs related to business development planning etc.

**IMPLEMENTATION OF MKSP IN POTTANGI & SEMILIGUDA BLOCKS OF KORAPUT
DISTRICT-ODISHA**

INCEPTION REPORT

Operational Fund of Marketing Society

The support shall cover operation cost for three years and other costs related to business development planning etc.

Independent evaluation studies

The studies shall be conducted around themes like Sustainable Agriculture, Horticultural Enterprises, NTFP operations, Livestock activities and Micro enterprise promotion with the key objective to continuously learn lessons for improvement and refinement.

Public information disclosure/ Social Audit

Public display of project information shall be made through wall writings, transparency boards, leaflets etc. Social audit shall be facilitated to promote participatory assessment of outcomes.

E. How the individual activity will be undertaken & by whom *(This how part should be explained clearly, this may also be converted as a Community Operational Manual (COM) / Training Manual (TM) for the staffs, community cadre & SHG members) HOWEVER, COM / TM will not be part of inception report.*

LAVS has drawn a detailed project implementation plan. Post recruitment of staff, orientation was organized for orientation of district and block level officials. This was followed by GP level orientation programme for PRI representatives. CRPs and PRPs have been identified and oriented before placement. Baseline survey and stakeholder consultations are under progress. The DPR shall be finalized incorporating specific targets and tasks in reference to the approved project proposal. Senior personnel of LAVS and thematic consultants shall handhold the process during implementation. A project MIS shall be maintained backed by knowledge management inputs from time to time.

Implementation Plan shall involve key village persons, opinion leaders, SHG members. To create better synergy and convergence Sarpanch, Secretary/ VAW, Ward members will also be invited in the meeting and share the plans with them and seek support. The panchayat will be kept informed of the progress through sharing of minutes of the meetings also. This will help develop clarity on project, actors, implementation Structure. Most of the components so finalized shall be integrated with respective sectoral plans during district planning. A project execution committee (PEC) shall also be formed in this meeting. Village level PEC would be involved in the implementation of the project and will oversee investments in the village.

F. Expected Output

F.1 Expected Annual Output

SI No	Milestones	Target
----------	------------	--------

**IMPLEMENTATION OF MKSP IN POTTANGI & SEMILIGUDA BLOCKS OF KORAPUT
DISTRICT-ODISHA**

INCEPTION REPORT

	Project Inception	
1	Mahila Kisan profiling	2000
2	DPR Preparation	1
3	Technical protocols documentation	4
4	Value-chain Studies	3
5	Livelihood opportunity Studies	2
6	District level workshop on project objectives and strategy	1
7	Block level workshops on project objectives and strategy	2
	Institution Building	
8	Formation/ strengthening of WSHGs	200
9	Mobilisation & Promotion of producer groups	30
10	Promotion of producer group federation	1
11	Management support to producer federation	1
12	Promotion of project level marketing society	1
13	Management support to marketing society	1
	Capacity Building	
14	Training module development : Print	4
15	Training module development : audio-visual	3
16	Training equipment & material (Flex posters, Cards, Drawing Sheets, markers etc.)	50 sets
17	Training to CRPs	20 Participants
18	Trainings to para-professionals	20 Participants
19	Training to Community (MKs)	400 Participants
20	Training to leaders & PRI	60 Participants
21	Exposure visits of CRPs to Best Practices	10 Participants
22	Exposure visit of para-professional to Best Practices	10 Participants
23	Exposure visit of Producer group/ federation/ marketing society leaders	20 Participants
24	Training to producer group leaders	60 Participants
25	Training to producer federation and marketing society leaders	40 Participants
	Community Investment Fund	
26	Demonstration plots for sustainable agriculture Protocols and practices	4
27	Construction of vermin compost pits	30
28	Distribution of small implements for drudgery reduction of Mahila Kisans	500 MKs
29	Inputs to the mahila kisan (grant/subsidy/full loan)	150 MKs
30	Inputs to producer groups/ federation (grant/subsidy/full loan)	30

**IMPLEMENTATION OF MKSP IN POTTANGI & SEMILIGUDA BLOCKS OF KORAPUT
DISTRICT-ODISHA**

INCEPTION REPORT

31	Operational Fund of Producer federation	1
32	Operational Fund of Marketing Society	1
	Knowledge Management	
33	Identification of best practices/ Experience sharing workshops	2
34	Documentation of best practices	2
35	Dissemination of best practices	3
	Monitoring & Evaluation	
36	Baseline survey	1
37	Independent evaluation studies	1
38	Public information disclosure (transparency writings)	20
39	Social Audit	10

F.2 Expected Convergence

For land and water works, MGNREGs potential will be exploited while for agriculture and allied sector activities convergence would be initiated with Department of Agriculture and other line departments. Resources from other donor agencies would be converged for large scale interventions. Under the project, the idea is to create prototypes for seepage pits in the low lands and water conservation in homestead land in this area. These structures are very suitable for small and marginal farmers, as irrigation wells have their own limitations being costly and need energy driven water lifting devices with running costs. These can be replicated on large scale under MGNREGS.

When other farmers from the same village and also other villages would see their use and benefits, they would also demand for them. The demand then would be facilitated to be channelized from MGNREGS. The technical and administrative staff would also be exposed to the idea so that a favorable climate is developed for scaling it in large numbers in the area. It is expected that an investment to the tune of Rs.50 lakhs can be attracted from MGNREGS and other such opportunities through convergence over the next three years. In addition, in order to bring best practices and intervention into the project area; LAVS will strengthen its collaboration with the technical and research institutions like OUAT, KVKs, CRRI, NABARD, RPRC, ICRISAT etc.

F.3 Month-wise expenditure plan (In Rs 000)

IMPLEMENTATION OF MKSP IN POTTANGI AND SEMILIGUDA BLOCKS OF KORAPUT DISTRICT IN ODISHA BY LAVS ODISHA: PHYSICAL & FINANCIAL TARGET YEAR 1 (In Rupees)													
SI No	Project Cost	MONTH WISE PROJECTION OF EXPENDITURE IN 000-YEAR 1											
		Jul	Aug	Sept	Oct	Nov	Dec	Jan	Feb	Mar	Apr	May	Jun
1	Project Inception	1	2	3	4	5	6	7	8	9	10	11	12
1.1	Mahila Kisan profiling	0	0	50	50	50	50	0	0	0	0	0	0
1.2	DPR Preparation	0	0	0	0	0	35.75	0	0	0	0	0	0
1.3	Technical protocols documentation	0	0	0	0	20	20	40	0	0	0	0	0
1.4	Value-chain Studies	0	0	0	0	0	0	50	0	50	0	50	0
1.5	Livelihood opportunity Studies	0	0	0	0	0	0	0	0	100	0	100	0
1.6	District level workshop on project objectives and strategy	30	0	0	0	0	0	0	0	0	0	0	0
1.7	Block level workshops on project objectives and strategy	0	30	0	0	0	0	0	0	0	0	0	0
A	Subtotal	30	30	50	50	70	105.8	90	0	150	0	150	0
2	Institution Building												
2.1	Formation/ strengthening of WSHGs	0	0	0	0	0	100	100	100	100	100	100	0
2.2	Mobilisation & Promotion of producer groups	0	0	0	0	0	60	60	60	60	60	0	0

IMPLEMENTATION OF MKSP IN POTTANGI & SEMILIGUDA BLOCKS OF KORAPUT DISTRICT-ODISHA

INCEPTION REPORT

2.3	Promotion of producer group federation	0	0	0	0	0	0	0	0	0	0	0	20
2.4	Management support to producer federation	0	0	0	0	0	0	0	0	0	0	0	50
2.5	Promotion of project level marketing society	0	0	0	0	0	0	0	0	0	0	0	20
2.6	Management support to marketing society	0	0	0	0	0	0	0	0	0	0	0	50
B	Sub total	0	0	0	0	0	160	160	160	160	160	100	140
3	Capacity Building												
3.1	Training module development : Print	0	0	0	0	0	100	100	100	100	0	0	0
3.2	Training module development : audio-visual	0	0	0	0	0	0	100	100	100	0	0	0
3.3	Training equipment & material (Flex posters, Cards, Drawing Sheets, markers etc.)	0	0	0	0	0	0	50	50	100	0	0	0
3.4	Training to CRP <Needs to be backed with detailed training schedule>	0	0	0	0	0	0	0	50	50	0	0	0
3.5	Trainings to para-professionals <Needs to be backed with detailed training schedule>	0	0	0	0	0	0	0	0	50	50	0	0
3.6	Training to Community <Needs to be backed with detailed training schedule>	0	0	0	0	0	0	300	300	300	300	0	0
3.7	Training to leaders & PRI	0	0	0	0	0	0	40	40	40	0	0	0
3.8	Exposure visits of CRPs to Best Practices	0	0	0	0	0	0	0	0	0	100	0	0
3.9	Exposure visit of para-professional to Best Practices	0	0	0	0	0	0	0	0	0	0	100	0

IMPLEMENTATION OF MKSP IN POTTANGI & SEMILIGUDA BLOCKS OF KORAPUT DISTRICT-ODISHA

INCEPTION REPORT

3.1o	Exposure visit of Producer group/ federation/ marketing society leaders	0	0	0	0	0	0	0	0	0	100	0	100
3.1	Service charge to CRP (Excluding the resource fee received by them as trainers)	30	30	30	30	30	30	30	30	30	30	30	30
3.1	Service charge to para-professionals (Excluding the resource fee received by them as trainers)	20	20	20	20	20	20	20	20	20	20	20	20
3.1	Training to producer group leaders	0	0	0	0	0	0	0	0	0	60	0	60
	Training to producer federation and marketing society leaders	0	0	0	0	0	0	0	0	0	40	0	40
C	Sub total	50	50	50	50	50	150	640	690	790	700	150	250
4	Community Investment Support												
4.1	Demonstration plots for sustainable agriculture Protocols and practices	20	20	0	0	0	0	0	0	0	0	0	40
4.2	Construction of vermin compost pits	0	0	0	0	0	100	100	100	100	100	100	0
4.3	Distribution of small implements for drudgery reduction of Mahila Kisans	0	0	0	0	0	0	0	50	100	100	0	0
4.4	Inputs to the mahila kisan (grant/subsidy/full loan)	0	0	0	0	0	0	0	0	0	150	150	150
4.5	Inputs to producer groups/ federation (grant/subsidy/full loan)	0	0	0	0	0	0	0	0	200	200	200	0
4.5	Operational Fund of Producer federation	0	0	0	0	0	0	0	0	0	0	0	50
4.6	Operational Fund of Marketing Society	0	0	0	0	0	0	0	0	0	0	0	50
D	Sub total	20	20	0	0	0	100	100	150	400	550	450	290

IMPLEMENTATION OF MKSP IN POTTANGI & SEMILIGUDA BLOCKS OF KORAPUT DISTRICT-ODISHA

INCEPTION REPORT

5	Knowledge Management												
5.1	Identification of best practices/ Experience sharing workshops	0	0	0	0	0	0	10	0	0	0	10	0
5.2	Documentation of best practices	0	0	0	0	0	10	0	0	0	10	0	0
5.3	Dissemination of best practices	0	0	0	0	0	0	0	15	0	0	15	0
E	Subtotal	0	0	0	0	0	10	10	15	0	10	25	0
6	Monitoring & Evaluation												
6.1	Baseline survey	0	0	0	0	30	30	0	0	0	0	0	0
6.3	Independent evaluation studies	0	0	0	0	0	0	0	0	0	0	0	100
6.4	Public information disclosure	0	0	0	0	0	0	0	20	20	20	0	0
6.5	Social Audit	0	0	0	0	0	0	0	10	10	10	10	10
F	Sub total	0	0	0	0	30	30	0	30	30	30	10	110
7	Administration Expenditure (Maximum 5% of total project cost)												
7.1	Staff salaries	15	15	17	17	17	17	17	17	17	17	17	17
7.2	Travel & conveyance	2.5	2.5	2.5	2.5	2.5	2.5	2.5	2.5	2.5	2.5	2.5	2.5
7.3	Stationary	0	0	0	5	5	0	15	0	0	0	0	0
7.4	Communication	0	0	0	4	4	0	0	4	4	4	0	0
H	Sub total	17.5	17.5	19.5	28.5	28.5	19.5	34.5	23.5	23.5	23.5	19.5	19.5
	GRAND TOTAL	117.5	118	120	129	179	575.3	1035	1069	1554	1474	905	810

IMPLEMENTATION OF MKSP IN POTTANGI & SEMILIGUDA BLOCKS OF KORAPUT DISTRICT-ODISHA
INCEPTION REPORT
