



**ANNUAL REPORT  
2022-23**



## ACRONYMS

ADB	:	Asian Development Bank
CBO	:	Community Based Organization
CHC	:	Custom Hiring Centre
CMSC	:	Community Managed Seed System
CSR	:	Corporate Social Responsibility
DFID	:	Dept. For International Development
FA	:	Facilitating Agency
FPC	:	Farmer Producer Company
FPO	:	Farmer Producer Organization
IFA	:	Independent Facilitating Agency
IFAD	:	International Fund For Agriculture Development
IPM	:	Integrated Pest Management
INM	:	Integrated Nutrient Management
GS	:	Gram Sabha
GP	:	Gram Panchayat
LAVS	:	Life Academy of Vocational Studies
NRM	:	Natural Resource Management
OMM	:	Odisha Millet Mission
PG	:	Producers Group
PPCL	:	Panchabatmali Producer Company Pvt. Limited
PMGSY	:	Pradhan Mantri Gram Sadak Yojana
SHG	:	Self Help Group
UNWFP	:	United Nations World Food Program
VDA	:	Village Development Association
VDC	:	Village Development Committee



# INDEX

Foreword

About LAVS

Strengthening Sustainable Agriculture & Livelihoods

Natural Resource Management

Climate Change Action

Strengthening Village Institutions

Capacity Building

Conservation of Environment & Bio-diversity

Nutrition & Community Health

Research & Evaluation

## **Disclosures**

- Financial Summary
- Our Partners
- Publications
- LAVS in Print Media





## Foreword

Life Academy of Vocational Studies (LAVS) has scaled new heights of excellence and achievements as it enters 24th year of vibrant operation positively impacting social engineering and rural infrastructure development in Odisha mostly benefiting the poor and vulnerable sections of our society. I share my sense of joy and pride with all of you who became a part and patron of this glorious journey. There have been times of challenge and tribulations but our collective endeavour and determination to serve with transparency and sincerity has strategically positioned the organization to play more productive innings in times to come contributing to the shared cause of inclusive and sustainable development.



I am full of optimism as I see the turn of events globally and in our country unleashing new ideas and opportunities for development. Technology and enterprise has become buzz words driving innovation and distribution across countries. Structural reforms, policy changes, programmatic direction and government's drive to promote governance accountability are welcome signals for rapid socio-economic transformation. Building right connects with the masses and stimulating their participation in this dialogue and change process is a big task which civil society must come forward to shoulder and deliver. With your continued support and encouragement, LAVS shall supplement all efforts that aim to improve quality of life through good governance. This fiscal year 2022-23 added diversity and depth to our operations as we expanded our outreach to more number of habitats, clientele and thematic domains. Our engagements have extended further in rural, tribal and critical backward areas of the state thanks to the support from donors and government agencies. I am indeed happy to share that we have been able to provide value added services and consultancy support in sensitive themes like developing Site Specific Wild Life Conservation Plan. I present a summary of our achievements during the year 2022-23 in this report with a promise to do better as we move forward with a shared vision and mission. Finally, I thank all those who have supported us all through and helped us to grow from strength to strength. I place on record our sincere gratitude to government bodies, donor institutions, subject experts and above all the communities but for whose support it was not possible to reach where we are. I also thank staff members and consultants for their dedication and solidarity and join them in the silver jubilee celebration of the organization.

As always, I eagerly anticipate and welcome your reflective thoughts on this extraordinary journey.

**Akshaya Mohapatra**  
President



## About Us :

Life Academy of Vocational Studies (LAVS) is a multi-thematic premier action research and grassroots organization in the state of Odisha. Registered under Societies Registration Act, XXI of 1860, it has entered 31st year of its operations with a mission to bring positive change and impact community life facilitating faster rate of human development. Its strategic programme cycles have witnessed increasing number of projects in the areas of surveys, studies, asset verification exercises, and impact assessment and evaluation assignments over the years. Community health, nutrition, water & sanitation, education, rural livelihoods, natural resource management, skill development, financial inclusion, enterprise promotion and good governance initiatives form the core functional areas of the organization for improving the access to rightful entitlements. It caters to the needs of a broad range of target groups including children, women, youth, scheduled population, minorities and vulnerable sections of the society. Its engagements involve consulting and advisories besides ground implementation of schemes and programmes in partnership with government and donor agencies. The organization is taking up assignments in Odisha and different states in the country as well. In Odisha, it operates in all 30 districts with a focus on southern and coastal districts for direct implementation. Inclusive and sustainable development has been a major theme of its engagement as it has implemented a number of assignments in the sector with the support of UN, Donors and Government agencies. The organization has prominent presence in the field of surveys and studies supported by government and other development actors. The organization aspires to be a catalyst of change, change management and sustainable development impacting lives of communities through innovation, linkage, technology transfer, extension and customized solutions. By virtue of a long diversified field implementation and professional exposure, the organization is able to win and implement projects supported by clients including World Bank, DFID, UNWFP, UNICEF, UNFPA, IFAD, ADB, State and Central Government agencies. Transparency, accountability, quality assurance and client compliance are key values the organization upholds and practices.

### OUR VISION :

An inclusive, holistic and sustainable development society where people's action is given priority for benefit and betterment of children, women, poor and marginal sections of the community, guaranteeing eco-friendly sustainable development based on equity, empowerment and initiatives for self reliance by the target clients.

### OUR MISSION :

Supplement community capacity building and skill up-gradation to promote in them a sense of ownership and active partnership with government and development agencies in decisions and programme's affecting their development and wellbeing.



## Registrations/ Accreditations/ Empanelment

### Registration

- Under Societies Registration Act -XXI of 1860 No-3710-384/91, Dated-28.11.1991
- Under FCR Act 1976 bearing No-104830015 Dated-07/08/2016 (renewed)
- Under 12 (A) of I.T. Act
- Under donation deduction Act 80 (G) of the IT Act 1961 Dated 18.06.2003
- Income Tax PAN AAATL 3043 L
- Goods and Services Tax [GST]
- TAN No. BBNL00375E

### Accreditations

- UNCCD, Germany
- Credibility Alliance, India
- Guide Star, India
- Global Environment Facility (GEE)
- National CSR Hub, Tata Institute of Social Sciences (TISS)

### Empanelment

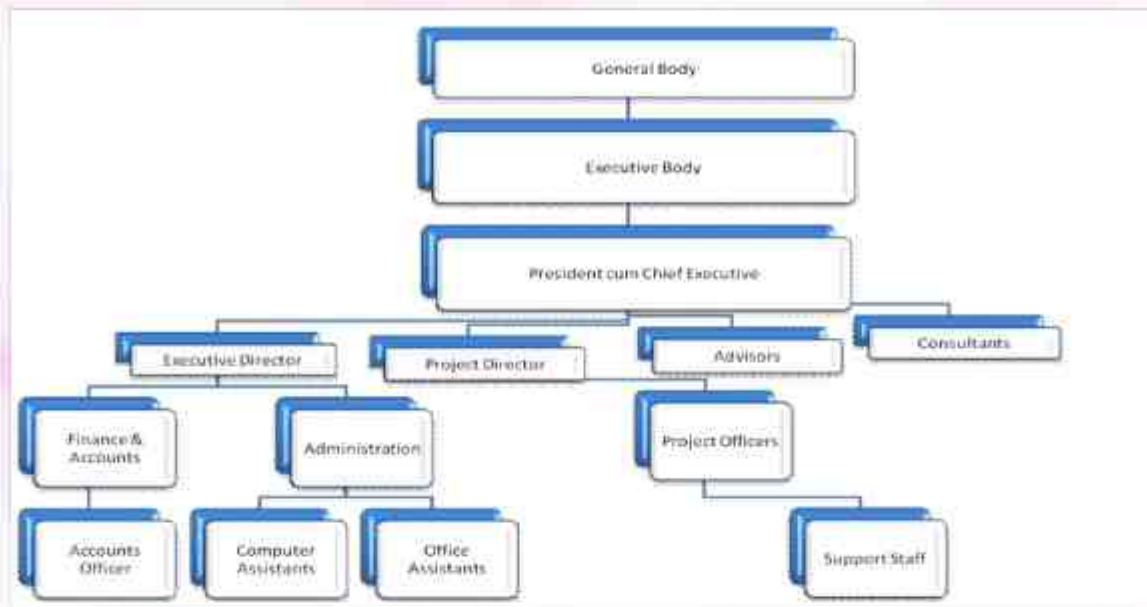
- National Water Mission, Govt. of India
- International Rice Research Institute, Philippines
- Odisha Primary Education Programme Authority, Govt. of Odisha
- Small Farmers' Agribusiness Consortium (SFAC), Govt. of India as Research Institute
- NCDS for SIA studies of different projects in state of Odisha
- Odisha State Water and Sanitation Mission (OSWSM) for independent verification of Gram Panchayats
- State Institute for Rural Development (SIRD), Govt. of Odisha

## Our Physical Presence

<b>Head Office</b>	17, AV Complex, Gadakana, P.O. Mancheswar Railway Colony, Bhubaneswar 751017, Odisha, Tel.: 0674 2117475 -Cell Phone +91-9437960808 Email- lavsOdisha@rediffmail.com & lavsOdisha@gmail.com
<b>Field Offices</b>	
<b>Koraput</b>	At: Badagan, P.O.: Pottangi, Dist.: Koraput Odisha 764039, Tel.: +91 -6853-252501, Email: lavs_kpt@rediffmail.com
<b>Jharsuguda</b>	At: Panchpada, P.O.: Industrial Estate, Dist.: Jharsuguda Odisha 768003, E-mail: lavs_jhsd@rediffmail.com
<b>Jagatsinghpur</b>	At: Damodarpatna, P.O.: Dainlo, Dist.: Jagatsinghpur, Odisha 754137
<b>Kalahandi</b>	At: Paradeshipada, P.O.: Bhawanipatna, Dist: Kalahandi Odisha 766001
<b>Mayurbhanj</b>	At: Arjunbilla, P.O.: Sukruli, Dist.: Mayurbhanj, 757089 Odisha



## ORGANOGRAM



### OUR THEMATIC FOCUS :

- Natural Resource Management and Governance, which includes environment conservation and Land and Water Management.
- Sustainable agriculture and strengthening livelihoods, which includes intervention on Ecological and Integrated farming, Livestock Management, Agriculture and Forest-based micro-enterprises.
- Climate Change and Community Resilience, which includes intervention on promotion of Climate resilient agriculture and livelihoods.
- Building & Strengthening community institutions which includes mobilization, capacity building and skill up-gradation.
- Conducting social impact assessment studies which include social audit of different welfare and development programs implemented across state including environmental safety audit.
- Nutrition and Community Health which includes community based nutrition and promotion of Nutrition sensitive agriculture.

### OUR TEAM :

Our team consists of professionals from multiple disciplines with extensive experience in fields like low input based sustainable agriculture, millet-based mixed farming, , community empowerment and issues related food security. Besides this, we hire and engage Consultants/discipline Specialist etc.as per requirement.



## INTERVENTIONS DURING THE YEAR

### STRENGTHENING SUSTAINABLE AGRICULTURE & LIVELIHOODS

LAVS's focussed interventions on rural livelihoods particularly in tribal pockets have reached out to around 4650 population covering 1140 households and 1200 target beneficiaries from 34 villages of 16 GPs in 2 blocks of Koraput and Mayurbhanj district.

Promotion and restoration of millets as mainstream Cereal Crop

In partnership with Odisha Millet Mission (OMM) as facilitating agency (FA) since 2017, LAVS has been implementing the special program for Millet Promotion with ATMA and WASSAN.

One of the prime objectives of programme is to improve the productivity of millets by adopting standard and improved agronomic practices such as System of Millets Intensification (SMI), Line transplanting (LT) and Line Sowing (LS). These improved agronomic practices have the potential to increase the crop yield, crop coverage area and ensure profitability of millet cultivation for the farmers.

During the year these improved practices have substantially improved the soil quality with efficient usage of water thereby promoting better crops and overall cropping system that is environment friendly. Farmers in the operational villages of the Block have reported several benefits of improved agronomic practices such as decreased input costs, significant increase in quality and quantity of the yield, reduced environmental pollution, reduced water usage barring its exploitative use and maintenance of the quality of soil that has resulted in higher crop productivity.

In 2022-23, a cumulative total of 694.20 hectares of land were covered under cereals engaging 1061 farmers from 99 villages of 14 GPs in Pottangi block, Koraput district in partnership with OMM.

#### Millet Processing Units

Due to absence of the improved processing facilities, millets have to be processed manually, which discourages the millet farmers to adopt value addition in millets. So, keeping this in mind, LAVS has taken an initiative for establishing small processing units like thresher, grader, dehuller & destoner etc. with the support of Odisha Millet Mission. The processing units were established at cluster level. As many as 15 such units were established in Pottangi Block of Koraput District, about 99 nos of villages are being facilitated by these units. As the women SHGs are managing these units, now it has become a sustainable Agri based enterprise for them.

#### Community Seed Centre

To ensure the accessibility of best performed quality seeds of different varieties locally, community managed seed centres (CMSCs) were set up in each block under OMM programme. These CMSCs are managed by registered Farmer Producer Organisations (FPOs). Training programme were organised for FPOs on the process of storing/preserving quality seeds through using storage bins, tarpaulin sheets, weighing machines and moisture meters. Besides, FPOs are also supported with a working capital for acquiring seeds and overseeing the operational costs. As of now, a total of 4 CSC has been established and are in operation.





### Custom Hiring Centre (CHC)

Agriculture is experiencing a slow move from reliance on human control and animal power mechanised control. Utilization of mechanised control encompasses a direct bearing on the efficiency in crop processing in addition to reduction in drudgery thereby encouraging convenience in agrarian operations. To facilitate farmers adopting agronomic practices, drudgery reduction tools and farm equipment and make available to small and marginal growers covering all production cluster, Custom Hiring Centres (CHCs) are being promoted under the special program for promotion of millets in tribal areas of Odisha. As many as 4 CHC has been established under the project support in its operational areas.

FPOs are backed with costs to be able to lease a workspace and agricultural equipment to be used on sharing basis. This centre is managed by Farmer Producer Organisations (PPCL) and WSHGs who maintain inventory and records for day-to-day operations.

#### Key Outcome/impact :

During the reporting year, LAVS helped 290 farmers adopt improved agronomic practices in their farm fields which resulted in considerable improvement in productivity amounting to a double from the traditional practice. About 1061 tribal farmers with a harvest of 14999.50 quintals of cereals (Ragi) and linked with formal market which helped the farmers gain an additional income of INR 8000-12000 per household. The program intervention has also contributed towards behavioural changes among the farmers who are now showing interest in adopting improved practices and methods.

### Vegetable Production through Community Nursery

Vegetable cultivation not only ensures supplementary nutrition at the households but also serves as remunerative and livelihood source for the rural tribal families. Pottangi block in Koraput district having huge potential for vegetable production, LAVS implemented community vegetable nursery approach to ensure timely supply of quality and healthy vegetable saplings to the farmers. Moreover, LAVS has promoted mixed cropping, inter cropping NPM practices etc. in the operational area helping farmers cultivate winner/cash crops like okra, brinjal, beans, cauliflower, tomato, cow pea, chilli etc. During the reporting year, a total 436 farmers cultivated vegetable including watershed area on 224 acres of land in 28 villages of 5 GPs.

Zero Energy Cool Chambers (20 nos. with 100 kg capacity each) constructed under project support provided and ensured storage facility for the vegetable producers which helped farmers earn better price and prevented them from distress sale.

#### Key Outcome/impact:

Vegetable cultivation with vegetable nursery at community level has helped the farming households enhance their nutritional security and remunerative income. Women farmers particularly engaged in vegetable cultivation happened to gain an additional income of INR 12000-20000 per head.



## NATURAL RESOURCES MANAGEMENT

Natural Resource Management (NRM) refers to the sustainable utilization of major natural resources, such as land, water, forests, fisheries and livestock and wild flora and fauna. Together, these resources provide the ecosystem services that provide better quality to human life.

LAVS in its constant and continuous efforts has been focussing on preservation of natural resources and enhancement of income opportunities for the rural tribal communities.

### Land and Water Management:

During the reporting period, around 86 acres of waste land were made cultivable through farm sector interventions like fruit tree plantation, land levelling, different water harvesting structures like check Dam, farm pond, DBI and trenches and drainage line treatment initiatives. These soil and water conservation interventions have been undertaken through leveraging sources from NABARD and convergence with other flagship programs/schemes like MGNREGS etc.

Furthermore, 68 acres of land were brought under eco-friendly agronomic practices like Non Pesticide Management (NPM), natural farming, Integrated Nutrient Management (INM), soil fertility management using organic manure and bio-input application by 648 farmers in 43 villages.

### Solar Based Irrigation:

Creation of irrigation potential through utilization of surface, rain and ground water resources is one of the important components of NRM activity. Solar based micro irrigation being a eco-friendly method of irrigation has been adopted in the watershed areas with 5 HP solar operated pumps with accessories. Under Solar Based Micro irrigation system, LAVS has created irrigation potential for 32 acres of land utilizing the perennial stream water.

### Outcome:

Introduction of Solar Based Micro irrigation in the operation area has helped 48 small farmers get assured irrigation to their farm fields bringing in additional areas under cultivation.





## BUILDING & STRENGTHENING COMMUNITY ORGANIZATIONS

As community empowerment is the key element in bringing about societal changes, LAVS has been sincerely engaged with more than 160 Community Based Organizations building their capacities to address their issues and take lead in the developmental process. Accordingly, LAVS has been working closely with enterprise oriented Producers Group(PG) at village level for production, aggregation and value addition to agriculture produces to maximize income level. LAVS has strengthened community level institutions like village development associations, self help groups, producers groups, producer company(FPO) etc through enhancing their participation in Palli Sabha, Gram Sabha and other appropriate forums and actively involved in community level planning, implementation and monitoring process.

During the reporting period, LAVS formed and strengthened the following institutions at different levels through organizing regular meetings, technical and handholding support.

Type of Institutions	Nos. Of Groups	Total Members	Women Members
Producers Group	68	3015	3015
Producer Company	1	435	248
SHGs	568	5740	5740
VDAs	12	183	86
Network/Federations	10	1836	1836

### Farmer Producer Organization (FPO)

LAVS as FPO promoting organization is taking all out efforts and initiatives to strengthen the farmer producer groups and enterprise focussed self help groups along with the apex institution of Farmer Producer Company (FPC). In the livelihood sector, women are encouraged to perform a crucial role in facilitating the process of collection and aggregation of agricultural produces, value addition and establishment of market linkages. Mobilization of farmers through meetings, awareness creation and timely supply of packaging and machinery remains the key responsibilities of LAVS. The producer company "Panchabatmali Producer Company Pvt. Limited(PPCL)" promoted by LAVS in Pottangi, Koraput has enrolled 435 stakeholders from 34 villages of 8 GPs. The organization has made efforts to link the FPC with ATMA, Koraput for enterprise development, value addition and marketing.

Moreover, the FPC has signed MoU with ATMA, TDCC and Mission Shakti for facilitating implementation of special programs like production of millets and facilitation of Mandi for finger millet procurement etc.

### Key Outcome/impact :

With enhanced capacity and institutional development, the farmers could realize the importance of climate change value chain through the producer company. A resilient livelihood system involving the FPC could be developed in the operational area. The PGs and FPC are actively involved in the planning and implementation of the government programs collaborating with ATMA, TDCC and Mission Shakti.



## CAPACITY BUILDING

During the reporting period, LAVS conducted capacity building need assessment exercise/studies across all operational areas. Based on the findings, and approved training activities under different ongoing projects, a series of capacity building programs were organized for multiple stakeholders like farmers, producers, CBO leaders, community resource persons (CRPs) in multifaceted thematic areas such as improved farm practices, adoption of NPM, improved agronomic practices, sustainable natural resource planning and utilization, enterprise promotion, awareness campaign on better consumption of nutri- cereals, livestock rearing, post harvest management, value addition, recipe preparation, kitchen garden etc. The year witnessed a total of 86 training and exposure programs on different climate change sustainable livelihood components and around 290 of stakeholders including 112 women received training.

Moreover, people from different community were made aware about the importance of millet cultivation for sustaining ecological balance and nutrition based diets by organizing food festivals and alternative recipe preparation and consumption.

### Summary of Cumulative Trainings conducted under NRM, Climate Action & Sustainable Agriculture based livelihoods

Sl. No	Theme	No. of Trainings	Duration	No. of Participants
1	Project Inception/Interface workshop with line deptt. Officials	1	One day	28
2	Training on improvement of soil health, INM, IPM	2	One day	62
3	Training on crop water budgeting, drip irrigation	1	One day	30
4	Training on improved cropping/agronomic practices	2	One day	58
5	Orientation training on RF, WDF management, Book Keeping to SHG, VWC, FPO, CIG Members	2	One day	56
6	Training on Organic farming practices (preparation of Handikhata, Jeevamruta, Beejamruta, Vermi compost etc.)	2	One day	62
7	Training on improvement of Nutritional security	3	One day	58
8	Training on crop Diversification	4	One day	68
9	Training on crop intensification	4	One day	65
10	Training on livestock management, vaccination, backyard poultry	1	One day	28
11	Training on vegetable cultivation, nursery development, Backyard kitchen garden	3	One day	66
12	Training on Post harvest management	1	One day	28
13	Exposure visit on crop diversification	1	One day	20
14	Exposure visit on integrated farming	1	One day	20
15	District level workshop on Climate Change Adaptation & Mitigation	1	One day	55
16	Publication of IEC material on Organic farming, climate change impacts & adoption measures	1	One day	32
17	Specific training for SHG members on IGA development. (off farm-Bee keeping, Mushroom, NTFP)	3	One day	45
	<b>Total</b>	<b>33</b>		<b>156</b>



**Summary of Cumulative Trainings conducted under OMM**

Sl. No	Type of CB Programs	Up to 2021-22	During 2022-23	Cumulative Achievement	Farmers Covered
1	Residential & Non -Residential trainings (Agronomic Practices, Recipes, Value Addition, Seed etc)	41	19	60	80
2	Awareness Campaigns	19	18	37	-
3	Block Level Convergence Workshops	3	1	4	64
4	Field Days	13	6	19	550
5	Community Food Festivals	5	9	14	3000
	<b>Total</b>	<b>81</b>	<b>53</b>	<b>134</b>	

**Key outcome/impact:**

Capacities of 290 CBO leaders/ key farmers in organic and natural farming practices, adopting improved agronomic practices, implementing climate resilient cropping system improved resulting in enhanced household income.





### CLIMATE CHANGE ACTION :

Following the previous year, equal focus was placed on promoting sustainable agriculture in the operational areas of the organization with special focus on watershed areas through promotion of climate resilient crops and livestock rearing/vet practices. Emphasis was given to crop diversification and adhering to water and climate sensitive patterns including residual moisture cropping. Inter cropping and mixed cropping was promoted for risk mitigation etc. The use of compost with NPM and other improved agronomic practices and methods resulted in better soil moisture retention, improved fertility, reduced dependence on chemical fertilizers, fewer incidences of plant diseases, better productivity and yield.

During this reporting period, around 156 farmers from 18 villages adopted climate resilient agronomic methods in 176 acres of land.

#### Key outcome/impact:

With enhanced community adoptive capacity on Climate resilience, farmers demonstrated their interest on crop diversification and interest on adopting climate resilient agronomic methods which resulted in enhanced income and alternative livelihood opportunities.

### RESEARCH AND EVALUATION

LAVS having been empanelled with many empowered agencies undertakes research and evaluation studies of external projects of the government and CSR. At the same time, activities like monitoring and evaluation constitute an integral part of each program implemented by the organization. It has thus enabled the organization to track progress and initiate course corrections for improving the program quality, effectiveness and measure the outcome and impact of the interventions.

#### Social Impact Assessment [SIA]

The SIA unit of Govt. of Odisha Nabakrushna Choudhury Centre for Development Studies [NCDS], Bhubaneswar has empanelled LAVS to undertake the SIA studies. LAVS has been continuously doing it since over 4 years.

LAVS has completed 9 such studies successfully and as its 7th study, it was assigned to undertake the study for Land acquisition of Private Land from three villages i.e. Sunkarimetu, Lenda (Lada) and Pitamahal under Rayagada Tehsil of Rayagada district for shifting of Rayagada-Kerada Road between Rayagada-Ladda for construction of 3rd Railway Line project.

The assignment covered the above mentioned three villages having 23 affected households and acquisition of 7.508 Acres of land. The assignment was completed within 30 days.





As its 8th assignment, the NCDS engaged LAVS to undertake the Social Impact Assessment [SIA] Study at Jaleswar of Balasore district for land Acquisition of private land from two villages in Jaleswar Tehsil for construction of RoB at KMs 182/10-12 between Jaleswar-Laxmannath road Railway Station of SE Railway on Kharagpur- Bhadrak Railway Station'.

The assignment involved acquisition of 0.305 Acres of land, and 45 households. The assignment was completed within 30 days.

NCDS assigned the 9th SIA study to LAVS for Land Acquisition of 72.911 acres from three villages i.e. Keshariguda and Nabarangpur under Nabarangpur Tehsil and Gadabaguda under Nandahandi Tehsil of Nabarangpur District for construction of Jeypore- Nabarangpur New BG Railway Project [ToR 10- 00002].

The assignment involved acquisition of 72.911 Acres of private land from the above mentioned villages having 107 households.

### **Social Audits under Odisha Urban Housing Mission**

Pradhan Mantri Awas Yojana (PMAY) Housing for All (HFA) - Urban mission is a scheme that requires the participation of various stakeholders such as beneficiaries, private partners, ULBs, NGO/CBOs that require mobilization, participation and support for successful and timely implementation. Thus it becomes necessary to evaluate the functioning of this scheme at various levels to evolve and introduce corrective mechanisms in the implementation of the scheme.

Pradhan Mantri Awas Yojana (PMAY) Housing for All (HFA) - Urban mission is being systematically monitored by the Ministry of Housing and Urban Poverty Alleviation (MoHUPA) at various levels. Constitution of Third Party Quality Monitoring

Agencies (TPQMA) is one of the monitoring mechanisms used by the Ministry. Besides the data generated through systematic assessments of quality of construction work, the Ministry tracks 'social impact' of the HFA Mission - especially the relevance of the Mission, from the point of view of the beneficiaries and other stakeholders.

A social audit is a participatory monitoring exercise used to systematically assess the progress of the PMAY mission. It is not just an information-gathering exercise, but a tool for social mobilization and sensitization of the mission objectives to a wide range of stakeholders.

"Mission, at its discretion, will also assist State/UT Governments in undertaking social audit of the projects being implemented under the mission. Such social audit would be carried out by State/UT





Government and ULBs through credible institutions including technical institutions (IITs, NITs etc.) and architectural and design institutes and through students of such institutions. Mission will provide 100% financial assistance for social audit with the approval of CSMC 1.” Social Audit provides the beneficiaries and other stakeholders an opportunity to scrutinize the procedures and benefits of the Mission. It effects better implementation, ensures accountability, transparency and participation.

During the reporting year, LAVS was assigned to conduct Social Audits of 31 ULBs in the state. Till the end of the fiscal year 2022-23, it has already conducted the Social Audits in 31 ULBs and has submitted its final reports to Odisha Urban Housing Mission(OUHM)

### Key Findings

- Most of the beneficiaries across the cities knew their entitlements from the mission through Urban Local Bodies, newspapers, posters, radio, TV channels, neighbors and hoardings.
- Inclusion of various marginalized communities was observed across all cities.
- It was observed across all the sites, beneficiaries were involved in the planning and designing of the layout and construction.
- Construction activities are done as per the sanctioned drawings.
- Beneficiaries are facing problems in obtaining the amount of the last installment.
- Beneficiaries are satisfied with the project services provided
- The role of Slum Dwellers Association (SDA) as community organizations in creating and coordinating with the ULBs is minimal.

### List of ULBs audited

Sl. No	District	ULB Name	Sl. No	Name of District	ULB Name
1	Balangir	Balangir - M	17	Balangir	Titilagarh (M)
2	Balesore	Jaleswar -M	18	Bargarh	Bargarh (M)
3	Cuttack	Chodwar-M	19	Boudh	Boudhgarh (N)
4	Deogarh	Deogarh-M	20	Cuttack	Cuttack (MC)
5	Ganjam	Aska-N	21	Dhenkanal	Bhuban (N)
6	Ganjam	Khalikote-N	22	Jagatsinghpur	Jagatsinghpur(N)
7	Kalahandi	Bhawanipatna-M	23	Koraput	Koraput (M)
8	Khurda	Balugaon-N	24	Mayurbhanj	Baripada (M)
9	Nuapada	Khariar-N	25	Nayagarh	Nayagarh (N)
10	Rayagada	Gunupur-N	26	Nuapada	Khariar Road (N)
11	Subarnapur	Sonepur-M	27	Puri	Puri (M)
12	Koraput	Kotpad NAC	28	Dhenkanal	Dhenkanal Municipality
13	Koraput	Sunabeda Municipality	29	Angul	Athmallik NAC
14	Bhadrak	Bhadrak Municipality	30	Keonjhar	Keonjharghar Municipality
15	Kandhamal	Phulbani Municipality	31	Sundargarh	Rourkela MC
16	Ganjam	Berhampur MC			





## NUTRITION & COMMUNITY HEALTH

### Kitchen Garden

The small & marginal farmers hardly get scope to develop crop which meet the nutritional need of their families. In order to provide access to nutritious food at their backyard, which plays an important role in fulfilling the healthy lifestyles as well as nutritious diets, LAVS supported 230 farmers in Pottangi Block for Nutri-kitchen garden, which plays a significant role in improving food security as well as dietary diversity. We provided ten types of vegetables like Green pea, Beat, Cucumber, Beans, Cowpea, Lady's finger, Tomato etc. As a result, now they are able to get fresh and organic nutritious veggies from their garden.



### Community Food Festival

As many as 09 nos. of Food Festivals were organized under the special programme at cluster level during the period under report. The objective of organizing such events was to familiarize the general public with importance of millets and its consumption, nutritional values of millets, Foods prepared and served in the Food festivals included Mandia Soup, Mandia Laddu, Mandia Bara, Mandia Piajee, Mandia chop and Mandia Pakudi [*Mandia is the colloquial word for Ragi; the finger millet*]





## FOREST & WILD LIFE CONSERVATION

Forest and wildlife are part and parcel of our precious and fragile environment and need protection and conservation. Because of fast shrinking and indiscriminate destruction of forest has created a dangerous situation for humankind. Therefore forests and renewable sources of nature need to be preserved, protected and expanded. Depletion of forests also causes soil, erosion, floods, erratic rain-falls, droughts etc.

Keeping in context the growing threat to forest and shrinking forest coverage, LAVS has been thriving hard to implement appropriate project measures for conservation and protection of forest as one of the primary natural resources. In this regard, LAVS has been implementing mega plantation program under CSR fund in partnership with Grow-Trees in Mayurbhanja District of Odisha since 2020.

In keeping pace with the ongoing efforts like previous year; LAVS planted another 5+ lakhs of saplings in Kuliana and Bisoi blocks of Mayurbhanj district. Saplings with the same varieties as in the Phase 1 program.

The project will seek to address management of wasteland by plantation which shall also lead to economic empowerment of the communities living adjacent to the plantation area. Objectives of the project are:

1. Make productive use of wasteland by planting suitable species of plants which can be useful in enhancing green coverage of the area.
2. Engage community members/ collectives to take care and protect the plantation.
3. Take appropriate care of the plantation for a specific period of time and ensure lowest mortality and morbidity.
4. Ensuring that the plantation is handed over the community for management and use of it for their economic development.
5. Large scale afforestation to be used as a major impact on climate change, to keep the environment stable and balanced.
6. Large scale afforestation in the proposed area which is located at the foot hills of Similipal reserve forests, shall act as a corridor for migrant elephants.
7. Ensure availability of enough food for the migrant elephants.

## NURSERY AT MAYURBHANJ





### Details of the Plantation

No. of Block[s]:	02	[Kuliana, Bisoi]
No. of GPs:	04	[Parulia, Chandua, Asana, Nuagaon]
No. of Villages:	04	[Kanyabuda, Sunaria, Asana, Sanajambila]
No. of Patches:	06	[Kanyabuda, Sunaria-1, Sunaria-2, Asana-1, Asana-2, Sanajambila]
No. of Species:	07	[Acacia, Karanja, Sisu, Simarouba, Teak, Amla, Gambhari]

Sl.	Block	GP	Village	Area (HA)	Acacia	Karanja	Sisu	Simarouba	Teak	Amla	Gambhari	Total
1	Kuliana	Parulia	Kanyabuda	32	17520	33140	49500	16690	39330	6740	2080	165000
2		Chandua	Sunaria	62	22240	44640	66960	22320	64570	250	2200	223180
3			Sunaria- 2	12	4450	11504	10220	5520	10226	550	650	43120
4	Bisoi	Asana	Asana-1	12	5161	9289	11700	4250	7050	7400	1950	46800
5			Asana-2	0.6	206	415	652	207	680	0	0	2160
6		Nuagaon	Sanajambila	13	5620	9640	13960	4125	12400	2150	1305	49200
Total				131.6	49577	98988	139032	48987	121856	14940	6880	529460





### Programs conducted by LAVS

- Agroforestry Plantation in Mayurbhanj district
- Social Audit survey under Pradhan Mantri Awas Yojana (Urban) in Odisha, OUHM,
- Odisha Preparation of Site Specific Wild Life Conservation Plan [SSWLCP]
- SIA Study of Land Acquisition for Construction of Khorda Road-Bolangir New B.G. Rail Link Project/ Kurlughati MI Project/ Patharagadia to OERC Building Road/ Balabhadrapur – Kaliapani village /Construction of Approach Road to Railway Bridge in Barbil Tahasil of Keonjhar district /Construction of New Govt. Medical College at Jajpur/ shifting of Rayagada-Kerada Road between Rayagada-Ladda for construction of 3rd Railway Line project /construction of RoB at KMs 182/10-12 between Jaleswar-Laxmannath road Railway Station of SE Railway on Kharagpur- Bhadrak Railway Station'/construction of Jeypore- Nabarangpur New BG Railway Project
- Odisha Tribal Empowerment Livelihoods Project (OTELP)
- Watershed Development Program funded by NABARD
- Implementation of Mahila Kisan Sashaktikaran Pariyojana (MKSP) in Koraput District, Odisha
- Special Programme for promotion of Millets in tribal areas
- Community based climate change adaptation initiative – WDF
- Promotion of Farmers Producer Organization [FPO]
- Implementation of Resettlement Plans for Machhagaon, Pattamundai and HLC-Range-1 subprojects
- Formation and Election of WUA for in Upper Indravati Left Canal Extension System in the District of Kalahandi as per PP Act
- Formation and Election of WUA for in Upper Indravati Right Canal Extension System in the District of Kalahandi as per PP Act
- Survey of identified villages in the TSP areas of Odisha for implementation of solar electrification project
- Land Allocation Programme in Koraput district
- Left Wing Extremism Affected Area Development (SHG – Bank Linkage Programme)
- Multi Disciplinary Support to Pani Panchayats under RKVY
- Baseline Survey for Peripheral Development in Balasore District
- Evidence based Media Advocacy on Malnutrition and Stunting Child covering the state of Odisha
- Survey of SCSP Beneficiaries under SCA
- Urban Health Programme, Jharsuguda
- Vulnerable Groups Health Programme, Lakhanpur, Jharsuguda
- Project Implementation Consultancy: Social Safeguard Instruments including R & R, Environmental safeguard instruments covering the state of Odisha
- Financial Inclusion Programme for Women Development Efficacy Study and Evaluation of EDUSAT Programme in Odisha
- Verification of Swallow Tube wells in Jagatsinghpur District
- Advocacy Programme on RCH
- Odisha Community Tank Management Programme
- Comprehensive Annual and five-year District Plan: Participatory need assessment and program planning for integrated community development
- Targeted Intervention for FSWs/ MSMs
- Intervention at Transit points for control of HIV/AIDS: IEC, Information Kiosks, Health Camps & Counselling
- Project 'Surakshya'



- Translation of books on relevant acts/ rules to tribal languages: Awareness and IEC for legal literacy and community empowerment
- Education Guarantee Scheme in Kendrapada district
- Popularization of herbal plantation
- Village Development Micro Plan, Jugsaipatna, Bhawanipatna Block, Kalahandi
- Human Development Initiative in Koraput District, Odisha
- Socio-economic development of indigenous people Thuamul Rampur Block, Kalahandi
- Village Development Micro Plan, Golamunda Block, Kalahandi: RRA, Micro Planning, Training, Natural Resource management and Income Generation Activities
- SHG Promotion / Micro Credit in Jagatsinghpur, Kalahandi & Koraput
- NRM activities through Food for Work during post cyclone rehabilitation in Jagatsinghpur district
- Vocational Training, Jagatsinghpur supported by IGSSS under FVTF Programme
- National Education Group (NEG) Programme at Jagatsinghpur supported by IGSSS under NEG programme
- Verification of Swallow Tube wells in Jagatsinghpur District
- Household survey under USHA project, Govt. of Odisha
- Assessment of Climate Change Vulnerability in Koraput District
- R & R Study and Implementation of Resettlement Plans for Machhagaon, Pattamundai and HLC-Range-1 subprojects
- Socio-economic study to strengthen WUAs for in Upper Indravati Right Canal Extension System
- Survey of identified villages in the TSP areas of Odisha for implementation of solar electrification project
- Socio economic survey and profiling of Mahila Kisans under MKSP project
- Socio economic survey and facilitation of Land Allocation Programme under FRA
- Socio economic survey and development planning for Left Wing Affected Areas
- Evaluation of economic improvement of SCSP beneficiaries from 2005-6 to 2009-10 (19000 sample)
- National Field verification of PRIs for RGPSA awards-Assam, Manipur, Odisha
- National Field verification of PRIs for RGPSA awards-Assam and Manipur
- National Field verification of PRIs for RGPSA awards-Kerala
- Baseline study on forest dwellers in KBK districts
- Socio Economic survey of CSR beneficiaries in Baleswar District
- Social, environmental, road safety, road maintenance survey and assessments in 30 districts
- Survey for Preparation of District Five Year and Annual Perspective Plan- Bargarh
- Outcome evaluation of UNDP supported CBNRM project
- Study on Women centric Enterprises In Odisha
- Asset verification Survey of SWs and Pump Sets
- Baseline Survey on Financial Inclusion and Status of Tribal Women
- Community Resource Mapping Study with special reference to NRM
- Status of Pani Panchayats in Athagarh Division of Cuttack, District
- Baseline study to design interventions targeting SHG promotion
- Study on NTFP and Herbal Plantation in Deogarh District
- Study of Women centric Enterprises in Odisha
- Comprehensive assessment of damage caused to agriculture land and local livelihoods in Jagatsinghpur district
- Study on Livelihood Opportunity and analysis in reference to farm and non- farm sectors in Pottangi, Koraput
- Baseline study for preparation of village development micro plans



## Financial Summary



**PARTHA S MISHRA & CO**  
Chartered Accountants

### INDEPENDENT AUDITOR'S REPORT

Audit Report under section 12 A (b) of the Income Tax Act, 1961, in the case of Charitable or religious trusts / institutions.

We have examined the Balance Sheet of **Life Academy of Vocational Studies (LAVS)** as at 31<sup>st</sup> March 2022 and the Income & Expenditure Account maintained by the said trust/institution for the year ending on the said date.

We have obtained all the information and explanations, which to the best of our knowledge and belief were necessary for the purposes of the audit. In our opinion, Proper books of account have been kept by the head office and the branches of the above named trust/institution visited by us so far as appear from our examination of the books, and proper returns adequate for the purposes of audit have been received from branches not visited by us subject to the comments given below:

Our opinion and to the best of our information and according to the information given to us the said accounts give a true and fair view-

- 1) In the case of Balance Sheet, of the state of affairs of the above named trust/institution as 31<sup>st</sup> March, 2022 and
- 2) In the case of Income and Expenditure account, of the Excess of Income over Expenditure of its accounting year ending on 31<sup>st</sup> March, 2022.

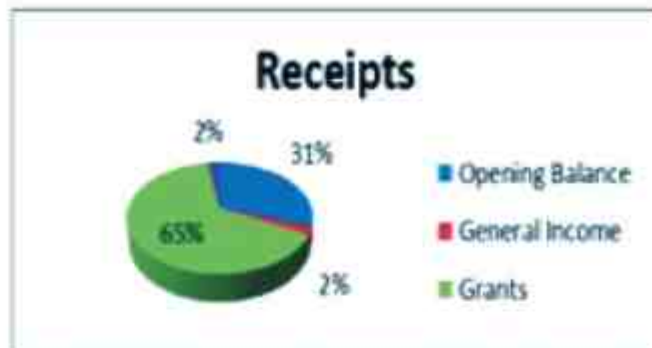
For PARTHA S. MISHRA & Co.  
Chartered Accountants  
*Sanjay Kumar Patra*  
CA S.K. Patra (FCA, DISA)  
Partner. M. No- 301929

UDIN: 22301929AUETUC5080

Date: 22/09/2022  
Place: Bhubaneswar



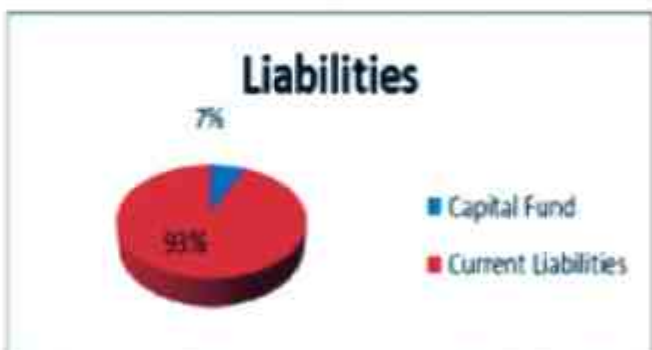
Receipts	
Heads	%
Opening Balance	30.50
General Income	2.19
Grants	64.89
Others	2.42
<b>Total</b>	<b>100.00</b>



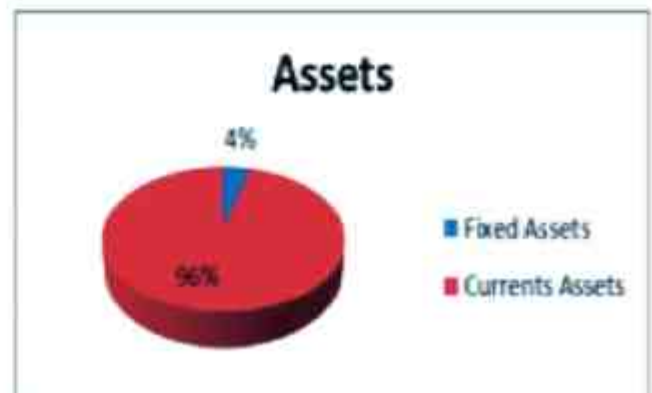
Payments	
Heads	%
General Expenses	1.30
Payables	0.43
Capital Expenses	0.13
Project Expenses	51.40
Others	0.90
Closing Balance	45.84
<b>Total</b>	<b>100.00</b>



Liabilities :	
	%
Capital Fund	6.90
Current Liabilities	93.10
<b>Total</b>	<b>100.00</b>



Assets :	
	%
Fixed Assets	4.20
Currents Assets	95.80
<b>Total</b>	<b>100.00</b>





### Our Partners









# Publications



## ଜଳ ସ୍ଥିତି ଓ ଉଦ୍‌ବିସ୍ମତ

ପ୍ରକାଶକ :



ଜାତୀୟ ସହଯୋଗୀ ପଢ଼ା, ଯୋଜନାବଳୀର ଅଧିକ, ଗାନ୍ଧିନୀ, ଭୁବନେଶ୍ୱର-୭୫୧୦୧୫

ସହାୟତା

କୌଶଳିକ

ସଂପାଦକ- ଶ୍ରୀ ଦୀପାକର ଉପାଧ୍ୟାୟ  
ଭବନ - ଚନ୍ଦ୍ରକାନ୍ତ ପାଠକ ହାଉସ୍



ମାଟି ଓ କୌଶଳିକ ଜାଗରଣ  
ଭବନ

## ଜଳବାୟୁ ସହଣୀ କୃଷି

ପ୍ରକାଶକ :



ଜାତୀୟ ସହଯୋଗୀ ପଢ଼ା, ଯୋଜନାବଳୀର ଅଧିକ, ଗାନ୍ଧିନୀ, ଭୁବନେଶ୍ୱର-୭୫୧୦୧୫

ସହାୟତା

କୌଶଳିକ

ସଂପାଦକ- ଶ୍ରୀ ଦୀପାକର ଉପାଧ୍ୟାୟ  
ଭବନ - କୃଷି ସମ୍ପର୍କ ପ୍ରତିଷ୍ଠାନର ଅଧିକାରୀ (୨୦୧୫)

ଜଳବାୟୁ ସହଣୀ କୃଷି  
କେଜଲ- ୩, ପଦେଶ ହାଉସ୍ ଭବନ



ମାଟି ଓ କୌଶଳିକ ଜାଗରଣ  
ଭବନ

## ମାଟିକୁ ଜାଣନ୍ତୁ

ପ୍ରକାଶକ :



ଜାତୀୟ ସହଯୋଗୀ ପଢ଼ା, ଯୋଜନାବଳୀର ଅଧିକ, ଗାନ୍ଧିନୀ, ଭୁବନେଶ୍ୱର-୭୫୧୦୧୫

ସହାୟତା

କୌଶଳିକ

ସଂପାଦକ- ଶ୍ରୀ ଦୀପାକର ଉପାଧ୍ୟାୟ  
ଭବନ - ପୂର୍ଣ୍ଣିମା ପୁସ୍ତକ  
ପ୍ରକାଶକ ହାଉସ୍ ହାଉସ୍



ମାଟି ଓ କୌଶଳିକ ଜାଗରଣ  
ଭବନ

## ଶୁଦ୍ଧାକ୍ଷର ଚାଷକୌଶଳ

ପ୍ରକାଶକ :



ଜାତୀୟ ସହଯୋଗୀ ପଢ଼ା, ଯୋଜନାବଳୀର ଅଧିକ, ଗାନ୍ଧିନୀ, ଭୁବନେଶ୍ୱର-୭୫୧୦୧୫

ସହାୟତା

କୌଶଳିକ

ସଂପାଦକ- ଶ୍ରୀ ଦୀପାକର ଉପାଧ୍ୟାୟ  
ଭବନ - ଚର୍ଚ୍ଚାକ୍ରମ ଓ ଅନ୍ୟାନ୍ୟ  
ପୁସ୍ତକ ପ୍ରକାଶକ, ଭୁବନେଶ୍ୱର



ମାଟି ଓ କୌଶଳିକ ଜାଗରଣ  
ଭବନ



# Photo Gallery



