

# ANNUAL REPORT

## 2024-25



**Life Academy of Vocational Studies (LAVS)**



# ANNUAL REPORT 2024-25

## ***CONTENTS***

1. PRESIDENTIAL ADDRESS
2. PREFACE
3. ACKNOWLEDGEMENT
4. **CHAPTER I: WE ... the LAVS**
  - 4.1 About the Organization
  - 4.2 Registrations, Accreditation/ Affiliations/ Empanelment
  - 4.3 Mission/ Vision
  - 4.4 Values
  - 4.5 Organization Structure
  - 4.6 Outreach
  - 4.7 Harmonic Motions over the Decades
  - 4.8 Organizational Concerns
5. **CHAPTER II: PROGRAMME HIGHLIGHTS FY 2024-25**
  - 5.1 Innovation for Resilient Agriculture and Thriving Communities
  - 5.2 Revival of Millets as Mainstream Cereal Crop
  - 5.3 Addressing Climate Change
  - 5.4 Mega Plantation
  - 5.5 Programme on Direct Seeded Rice (DSR)
  - 5.6 Promoting FPO
  - 5.7 Graduating WSHGs
  - 5.8 Social Impact Assessment Studies
  - 5.9 Nurturing Today's Saplings for Tomorrow's Green Bhubaneswar
  - 5.10 Evaluation of NHM assisted project
  - 5.11 Research & Evaluation
6. **CHAPTER III: SUCCESS STORIES**
7. **CHAPTER IV: FINANCIAL HEALTH (FY 2024-25)**  
[Graphic Representation]
8. **CHAPTER V: MEDIA COVERAGE AND PHOTO GALLERY**



# PRESIDENTIAL NOTE

**A**t LAVS, our journey has been one of deep learning, resilience, and hope. Working among some of the most diverse and resourceful communities of this state, we have seen firsthand the strength that lies in collective action and the transformative power of compassion.

Odisha is home to rich traditions, vibrant cultures, and resilient people, yet many communities: particularly in tribal and remote areas – continue to face persistent challenges in health, education, livelihoods, and social empowerment. Our mission has been to bridge these gaps by working closely with communities, government institutions, and like-minded partners to ensure that development reaches the last mile. We believe that real change is possible only when communities are not just beneficiaries, but leaders of their own progress. This is why our approach is rooted in participation, inclusivity, and respect for local knowledge systems. Whether it is supporting adolescent girls to make informed choices, enabling sustainable livelihoods for women, promoting health awareness in tribal belts, or nurturing young leaders – our initiatives are guided by the belief that dignity and opportunity must be universal.

As we move forward, our commitment remains steadfast: to create pathways of equity and opportunity, to amplify the voices of the marginalized, and to nurture a future where no child, woman, or community is left behind.

On behalf of LAVS, I extend my gratitude to our partners, donors, volunteers, and above all, the communities we serve; because it is their courage and aspirations that inspire and guide us every day. Together, let us continue building an Odisha where every life can flourish with dignity and hope.

LAVS is a community-centered development organization driving agricultural and holistic rural development across Odisha since 1991. Despite initial challenging years, the organization is running along the principles of cooperation, trust, and mutual help and voluntarism.

Over the decades, through systematic planning and execution of contextualized and comprehensive intervention strategies, LAVS positively impacted tribal households through programs on formation and promotion of Farmers Producers Organisation (FPO), Natural Resource Management, Sustainable Agriculture and Livelihoods, Climate Change and Renewable Energy, Value Chain and Enterprise Development, Women Empowerment, Tribal Development, Capacity Building and Training so on.

The impactful journey wouldn't have been possible without the unwavering support of our esteemed donors, partners, other stakeholders. LAVS would like to express heartfelt gratitude to all. It is because of their resilient commitment; LAVS could conceptualize, implement and create opportunities for the needy sections of the society.



*Aschmita*  
President





# PREFACE

This document is not only a reflection of our activities and achievements, but also a testimony to the resilience and aspirations of the communities we work with across Odisha. Over the past year, our efforts have been guided by a singular conviction—that development must be inclusive, participatory, and sustainable.

Led by its dynamic leadership, propelled by development professionals and aided by robust organizational systems, Life Academy of Vocational Studies has positively impacted the lives of 50,000+ farmers, landless, women, youth and tribal households across 100+ villages of Odisha.

The Annual Report 2024-25 covers major aspects of organization's works and performance during the year 2024-25. It covers major milestones of LAVS, 3 decades' journey, outreach, highlights of contribution towards Sustainable Development Goals (SDGs), and the financial stands etc.

This Annual Report has been prepared based on the inputs collected and compiled from numerous sources such as monthly, quarterly, half yearly and annual project reports, impact reports, monitoring and evaluation reports, feedback and interviews of beneficiaries.

LAVS would like to thank all its donors, partners, staff, beneficiaries and other stakeholders who have extended necessary assistance either directly or indirectly in program conceptualization, planning, execution and successful project completion and in compilation of data for drafting and publication of this comprehensive Annual Report.

We hope that this Annual Report shall be useful to all our donors, partners, regulatory authorities, staff and villagers and, other relevant stakeholders by providing relevant information about our domain working areas, physical and financial performance, outcomes and impacts and in our endeavour towards Sustainable Development Goals (SDGs). As we look ahead, our resolve remains strong: to continue building pathways of opportunities and hope, and contribute to a just and inclusive Odisha where no one is left behind.





# ACKNOWLEDGEMENT

We express our deepest gratitude to all our donors, partners, well-wishers, and community members whose unwavering support and encouragement have been the cornerstone of our journey. Their generous contributions, guidance, and faith in our mission have enabled us to reach the most marginalized sections, create meaningful change, and sustain our efforts in empowering communities. We also acknowledge the tireless dedication of our team members and volunteers, whose commitment and compassion continue to inspire us every day. Together, their collective support has strengthened our resolve to move closer towards our vision of an equitable and inclusive society.



OXFAM



IndianOil





# CHAPTER I: WE the LAVS

## Who we are

A registered Civil Society since 1991, Life Academy of Vocational Studies (LAVS) has witnessed transformational changes along its growth trajectory due to its mission of promoting cutting edge solutions in the space of social engineering. It followed a dynamic strategy to mobilize stakeholder ownership and participation in all its projects. It responds to all calls for studies, action research, evaluation, impact assessment, planning, implementation, training and extension. Thematic domains like community health, nutrition, water & sanitation, education, rural livelihoods, natural resource management, skill development, financial inclusion, enterprise promotion and good governance initiatives form the core functional areas of the organization. It serves the needs of a broad range of target groups including children, women, youth, scheduled population, backward classes, minorities and vulnerable sections of the society.

## Registrations, Accreditation/ Affiliations/ Empanelment

### Registrations

- ☆ Society registered under Societies Registration Act XXI of 1860 (Govt. of India) vide No. 3710-384/91 dated-28.11.91.
- ☆ Registered with NITI Ayog (NGO Darpan) vide No. OR/2009/0005388
- ☆ Registered under FCR Act 1976 vide No-104830015 dated-22.01.99
- ☆ Exempted under section 12 A of Indian Income Tax Act
- ☆ Registered under donation deduction section 80 (G) of the Indian Income Tax Act 1961
- ☆ Income Tax PAN No. AAATL3043 L
- ☆ Registered u/s 69 of Finance Act 1994 - Service Tax Registration No AAATL3043L ST 001
- ☆ Registered under GST Vide No. 21AAATL3043L1ZW
- ☆ Registered under CSR 1 of Ministry of Corporate Affairs, Govt. of India vide No. CSR00015924
- ☆ TAN No. BBNL00375E
- ☆ Registered with Consultant Management Services, Asian Development Bank

### Accreditation/ Affiliations/ Empanelment

- ☆ Accredited with the UNCCD, Germany
- ☆ Accredited with Credibility Alliance, India
- ☆ Accredited with Guide Star, India
- ☆ Accredited with National CSR Hub, Tata Institute of Social Sciences (TISS)
- ☆ Empanelled with Odisha Primary Education
- ☆ Programme Authority, Govt. of Odisha
- ☆ Empanelled with Small Farmers' Agri-business Consortium, Govt. of India



- ✧ Empanelled with Govt. of Odisha as SIA for socio economic survey
- ✧ Empanelled with State Institute of Rural Development for conducting surveys, studies etc.
- ✧ Certified by Guide Star India (GSN 1059)

### Mission Statement

- ✧ Supplement Community capacity building and skill up-gradation to inculcate in them a sense of ownership and active partnership with government and development agencies in decision making and programmes affecting their development and well being.

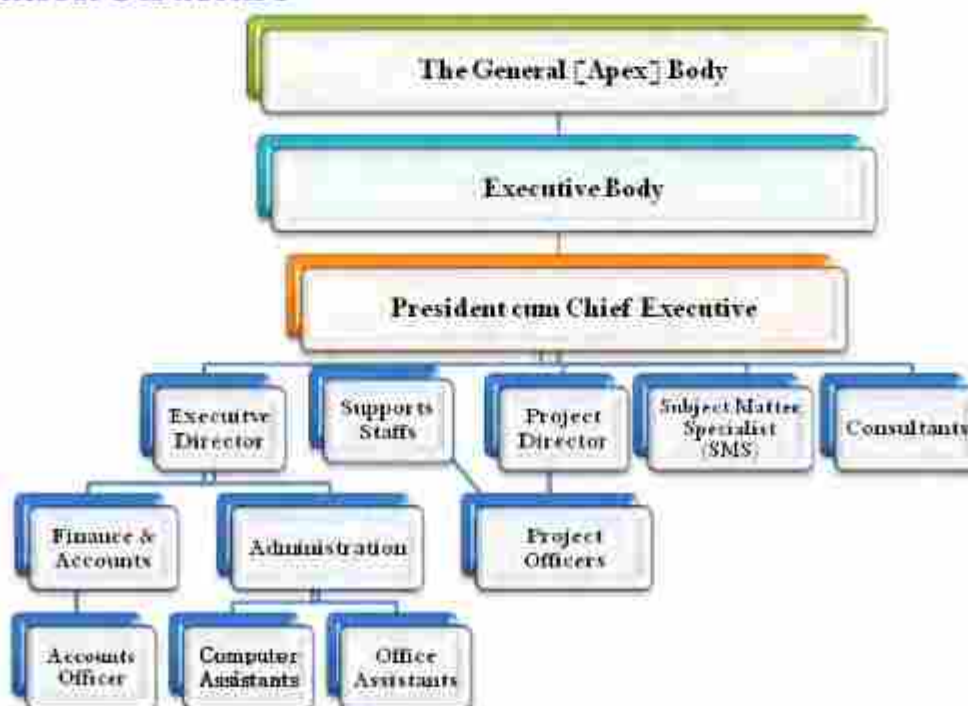
### Vision Statement

- ✧ A society where peoples' action is given priority for benefit and betterment of children, women, poor and marginal sections of the community, guaranteeing eco-friendly sustainable development based on equity, empowerment and initiatives for self-reliance by the target clients.

### Organizational Values

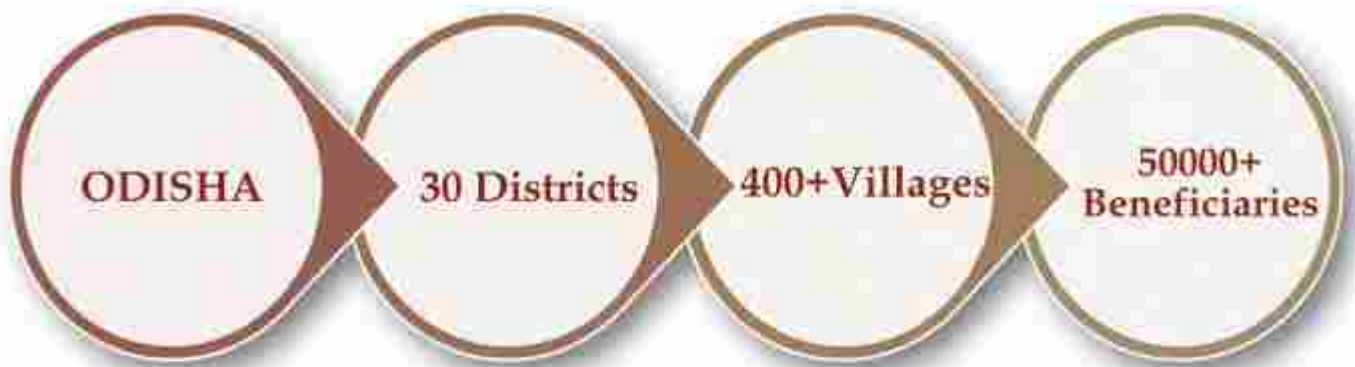
- ✧ Inclusive Growth
- ✧ Development through Credit
- ✧ Collective ownership through collective action
- ✧ Stakeholdership
- ✧ Gender Parity
- ✧ Transparency
- ✧ Probity

### Organization Structure

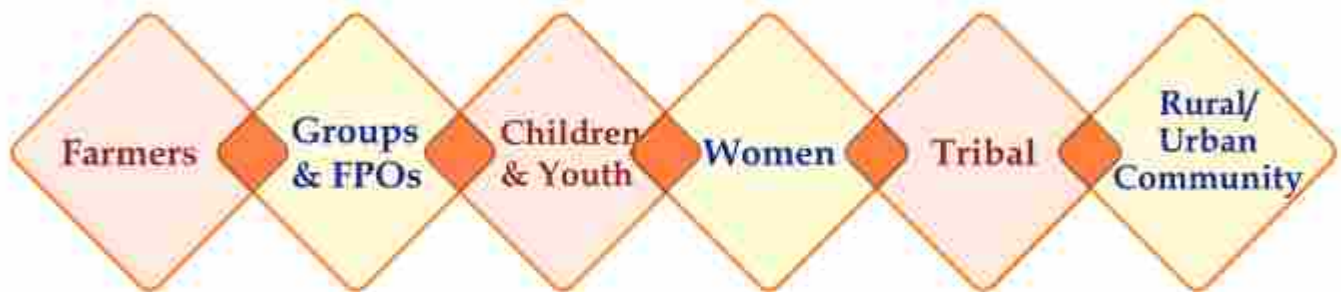




## OUTREACH



## Beneficiary Categories



## Thematic Domains



Sustainable Agriculture



Climate Change Action



Women Empowerment & Tribal Development



Natural Resource Management



Farmer Producers Organization



Farm & Non-Farm Enterprise



## HARMONIC MOTIONS OVER THE DECADES

### Community Mobilisation (1991-2001)

- ❖ Establishment of Life Academy of Vocational Studies (LAVS)
- ❖ Farmers & women mobilization for mutual help and cooperation
- ❖ Community based interventions such as, capacity building, soil and water conservation works
- ❖ Collectivization and promotion of farmers groups, women self-help groups and Producers Group
- ❖ Project implementation within surrounding villages

### Consolidation (2001 - 2011)

- ❖ Strengthening and consolidation of organizational systems
- ❖ Revisiting organisation's vision, mission, objectives, core values and operational domains
- ❖ Formulation of policies, manuals and strategies
- ❖ Full-time core staff
- ❖ Exploration and networking with district line departments
- ❖ Widening area of operation; include different districts

### Research and Development Focus (2011 - 2021)

- ❖ Expansion of working domains
- ❖ Pilot and promotion of FPO with SFAC & others
- ❖ Empanelment with SFAC, NABARD, NAFED and NCDC
- ❖ Incubation of all about FPO initiative
- ❖ Affiliation/ Accreditation/ Empanelment with TISS, MANAGE and Govt. Agencies
- ❖ Implementation of large scale CSR and FCRA projects

### Continuance (2021 on wards)

- ❖ Vision Document 2030 and Strategic Planning
- ❖ New initiatives-All about FPO, Value Addition to Agro-horti produces and enterprise development (Individual and group based)
- ❖ Outreach to other states
- ❖ Develop scalable and replicable development models; e.g. ½ acre mixed crop model
- ❖ Explore and pilot innovative domains and models; e.g.; practical solar irrigation
- ❖ Zero energy cool chamber for storage/ preservation at community level
- ❖ Dissemination of weather advisories to individual farmers effectively



## ORGANIZATIONAL CONCERNS

### Meetings of the Bodies

During the period under report, i.e.: commencing 1st April 2024 till 31st March 2025; in consonance with its Bye-Laws; 4 [four] meetings of the Executive Body were held with 2 Special meeting; culminating to be 6 [six]. Similarly, as for General Body Meeting, while the Annual General Body Meeting was mandatory; 1 [one] Special Meeting was held.

### Training of Staff

It is optimal that the staffs are adequately trained to address the needs of the organization. Keeping in view this; the following staffs were trained; in delivering their duties:

Sl. No.	Name of Staff	Training topic	Where	Duration
01	Gita Rout	MIS and Reporting	In-house	1 day [12 <sup>th</sup> June 2024]
02	Satyajit Pratihari	SIA Studies	In-house	1 day [18 <sup>th</sup> August 2024]
03	Saraswati Samantray	SIA Studies	In-house	1 day [18 <sup>th</sup> August 2024]
04	S. P. Beura	SIA Studies	In-house	1 day [18 <sup>th</sup> August 2024]
05	Aurobinda Mohapatra	SIA Studies	In-house	1 day [18 <sup>th</sup> August 2024]
06	S. P. Beura	Care of Saplings	In-house	2 days [14/15 <sup>th</sup> May 2024]

**Membership:** LAVS has received 4 requests for being a member which are under consideration. It will be finalized in the Annual General Body Meeting 2025.

**Staff Attrition:** Only 2 staff members attrite during the period under report owing their placement elsewhere.

**Vertical/Horizontal Expansion:** Kendrapara was added to our area of activities during the period under report. Vertically we did not expand.

**Observations/ Celebrations:** LAVS observed/ celebrated the following days of importance during the period under report.

Days observed/ Celebrated	Date
Akshaya Tritiya	10 <sup>th</sup> May 2024
World Water Day	5 <sup>th</sup> June 2024
Van Mahotsav	1 <sup>st</sup> July 2024
Independence Day	15 <sup>th</sup> August 2024
Ganesh Chaturthi	7 <sup>th</sup> September 2024
World Food Day	16 <sup>th</sup> October 2024
International Soil Day	5 <sup>th</sup> December 2024
Republic Day	26 <sup>th</sup> January 2025
Saraswati Puja	2 <sup>nd</sup> February 2025



## CHAPTER II: HIGHLIGHTS OF FY 2024-25

### INNOVATING FOR RESILIENT AGRICULTURE AND THRIVING COMMUNITIES

**Project:** Rejuvenating Watersheds for Agricultural Resilience through Innovative Development [REWARD]

**Funding Agency:** Department of Soil Conservation and Watersheds, Koraput (Govt. of Odisha)  
[Originated from support by the World Bank]

**Location:** 5 Watershed clusters in Koraput district  
[Jeypore-1; Jeypore-2; Boipariguda-1; Boipariguda-2; Borigumma]

#### Description of the Project:

The most important natural resource, upon which all human activity is based since time immemorial, is land. Man's inexorable progress towards development has, however, considerably damaged our land resource base. Further, land also suffers from various kinds of soil erosion, degradation and deforestation.

Scientific watershed management is not only a solution to address the land degradation and related issues but also contributes livelihood security in rainfed/degraded areas. The



Training on Backyard Poultry

World Bank assisted Rejuvenating Watersheds for Agricultural Resilience through Innovative Development (REWARD) program is a Watershed development program which is being implemented from 2021.

REWARD is a science-based watershed management programme supported by World Bank envisages complete involvement of science to achieve a holistic development of all the entities in Watershed. Land Resource inventory (LRI) and Hydrology are two pillars of this project. The LRI generates all the information related to the soil of each Micro-watershed (MWS) and develops crop suitability plan and nutrient management plan at cadastral/parcel level using GIS & Remote Sensing technology. In addition to that, development of LRI cards at parcel/ plot level is also undertaken by the LRI teams assigned (OUAT & ICAR-NBSS & LUP) for the project. The LRI information, thus generated is handed over to the hydrology teams assigned (OUAT/ IIT/ IISWC/ IWM) for successful plan



of soil & water conservation measures/ structures, drainage line treatment at MWS level. The scheme is being executed in 5 districts (Dhenkanal, Deogarh, Koraput, Nayagarh & Sambalpur) on a pilot basis. LAVS is associated with the program as capacity building partner in Boipariguda, Jeypore and Borigumma Blocks of Koraput District.

### Major Interventions:

- ☆ Improving water availability through up gradation of dilapidated and creation of new water storage structures.
- ☆ Undertaking watershed development with a ridge to valley approach
- ☆ Promotion of sustainable agricultural practices, farm ponds and farm-bounding for soil conservation
- ☆ Fodder development, animal health checks and scientific livestock management
- ☆ Promotion of sustainable tools and technologies

### Major outputs/outcomes:

- ☆ Total of 900+ M<sup>3</sup> impounding capacity created
- ☆ 4052+ acres of additional land brought under protective irrigation
- ☆ Farmers income enhancement

Within the scope of the assignment, a number of training programs are; directed to empower the stakeholders; which include farmers, watershed management team, concerned government officials are enriched. The project has; in its due course has undertaken various trainings for capacity building; with specific themes:

Thematic Area	Topic
Income Generation [Farm & Non-Farm]	Backyard poultry
	Mushroom Cultivation
	Goatary & Sheep
	Groundnut Cultivation
	Tailoring
	Vegetable Cultivation
	Maize Cultivation
	Poultry Business
	Sunflower Cultivation
	Millet Cultivation
	Sunflower Cultivation
	Tailoring
	Sugarcane Cultivation
	Petty Business
Geo-Social Aspects	Land Record Inventory
	Gender equity
Capacity Building	Convergence Planning

Commensuration with the above, the following training programs were conducted. The details are as follows:

Training Theme	SC	ST	Others	Total Participants	Male	Female	Training Days	Trainee Days
NRM - SWC Measures	4	13	30	47	39	8	1	47
Exposure Visit (NRM - SWC)	4	-	20	24	19	5	1	24
Water Budgeting & Governance	20	110	98	228	169	59	6	456
Resilient Crop Practices	5	-	17	22	17	5	1	22
<b>Total</b>	<b>33</b>	<b>123</b>	<b>165</b>	<b>321</b>	<b>244</b>	<b>77</b>	<b>9</b>	<b>549</b>

### Watershed Level Intervention

A total of 269 trainings were conducted at the watershed level, engaging 7,625 participants across diverse themes such as sustainable agriculture, natural resource management, gender equity, and livelihood promotion. Major participation was seen in Land Resource Inventory, Goat Rearing, Vegetable Cultivation, and Gender Equity, which together accounted for more than half of the total trainees.

Of the participants, 4,111 were Scheduled Tribes, 838 Scheduled Castes, and 2,676 from other communities. Women's participation was significant at 3,888, slightly higher than men (3,737), reflecting strong gender inclusion. Overall, the trainings generated 7,625 trainee days, enhancing local capacities and supporting sustainable livelihoods.

Training Name	No. of Trainings	Participants	SC	ST	Others	Male	Female
Gabion Structure - Exposure	1	44	1	18	25	38	6
Gender Equity	29	1018	66	625	327	499	519
Goat Rearing	48	1394	146	670	578	446	948
Groundnut Cultivation	16	426	35	124	267	305	121
Integrated Farming System	4	65	0	47	18	45	20
Land Resource Inventory (LRI)	41	1451	154	854	443	941	510
Maize Cultivation	9	243	17	142	84	151	92
Millet Cultivation	16	475	64	285	126	241	234
Mushroom Exposure- cum training	7	217	43	112	62	43	174
Paddy Cultivation	1	22	2	15	5	17	5
Petty Business	5	171	38	103	30	59	112
Pisciculture	6	124	4	107	13	50	74
Poultry Rearing	12	234	46	114	74	85	149
Sunflower Cultivation	1	11	0	0	11	11	0
Sheep Rearing	2	55	7	10	38	23	32
Sugarcane Cultivation	3	55	11	31	13	48	7
Tailoring Business	3	56	5	44	3	5	51
Training on NRM - SWC Measures	4	143	15	63	65	77	66
Vegetable Cultivation	61	1421	184	747	490	653	768
<b>TOTAL</b>	<b>269</b>	<b>7625</b>	<b>838</b>	<b>4111</b>	<b>2676</b>	<b>3737</b>	<b>3888</b>



## REVIVAL OF MILLETS AS MAINSTREAM CEREAL CROP

Project : Popularizing Millets in Tribal Areas  
 Funding Agency : Odisha Millet Mission [Koraput]  
 Location : Pottangi Block in Koraput district

### Description of the Project:

In the recent years, partnering with Shree Anna Abhiyaan(SAA) as a facilitating agency, LAVS has been implementing millet promotion program in convergence with ATMA and WASSAN in Pottangi Block, Odisha.

Millet, one of India's oldest cultivated cereals, used to have a strong presence in Odisha due to its nutritional value. In the southern districts of Odisha, millet has long been a staple food for generations. Despite its significance in the Indian diet, millet cultivation results in low yields, with most of the crop consumed by farmers' families. This is why of late farmers have been shying away from cultivating millets.

LAVS has played a pivotal role in connecting tribal millet farmers with the Shree Anna Abhiyaan (SAA), offering rural farmers a chance to improve their economic standard through better market access. Tribal farmers, especially women, have been equipped with improved PoPs (Package of Practices) including System of Millet Intensification (SMI), line sowing, line transplanting, and the System of Millet Intensification (SMI). These practices, combined with mixed cropping, consumption habits, and value addition through a cluster approach, have not only led to increased production but also



Latitude: 18.564206  
 Longitude: 82.953046  
 Accuracy: 1199.2 m  
 GPSTime: Nov 14 2023 12:19  
 Note: food festival orientation program

Powered by PhotoCam



significantly reduced the labour-intensive tasks associated with timely intercultural operations using farm equipment like weeders and pulverisers.

Life Academy of Vocational Studies (LAVS), as the Facilitating Agency (FA), has successfully executed the implementation of Shree Anna Abhiyaan in the project area. During the year, LAVS mobilized farmers and SHGs, prepared action plans, and facilitated the adoption of improved millet cultivation practices through training, exposure visits, and field demonstrations. It ensured timely supply of quality seeds and inputs, supported crop intensification, and promoted millet-based enterprises for women groups.

LAVS also undertook extensive awareness campaigns, recipe demonstrations, and nutrition promotion activities to encourage household consumption and integration of millets into ICDS and MDM. In addition, it strengthened community institutions such as SHGs and Farmer Producer Organisations, and facilitated market linkages for millet produce. Regular monitoring, reporting, and coordination with district administration and line departments ensured smooth convergence and effective programme delivery. Through these efforts, LAVS has played a vital role in bridging farmers with the programme and in promoting sustainable millet-based farming and nutrition security.

Training imparted under the project:

It is vital that introduction of Millet farming is a novel one; about 5 years old. The farmers are not well accustomed with advanced millet farming; they need to be qualified and trained to cultivate millet farming so that it can assist them in their economic growth.

During the period under report; the following training programs were organized for the farmers included in the intervention.

Sl. No	Topic	No of Trainings	No of Participant
1	Non-Residential Training within District for Women Campaign Team	1	16
2	Awareness Campaigns in villages to increase household consumption of millets.	2	64
3	Non-Residential Training within district on System of Millet Intensification.	5	100
4	Organisation of Field Day (Demonstration during Mid -season, Demonstration during CCE & Harvest of model plots)	6	300
5	CCE based on sampling and documentation	40	40
6	2 day Non -Residential Training of CRPs and Progressive Farmers on Agronomic Practices, Farmer Data collection, implementation, planning, regular follow up orientations etc	8	80
7	2 day Campaigns, Workshops with ICDS and PRI members and food festivals	5	1500
8	Awareness Campaigns on Procurement, Marketing, FAQ etc.	2	2000



Sl. No.	Name of GPs	Total Area under Millet Cultivation (Hectares)	No. of Farmers Involved	Annual Production (in Quintals)
1	Ampavali	95.2	167	1078.6
2	Chandaka	49	131	544.4
3	Deopottangi	72.2	177	874.6
4	Gangarajpur	40.2	123	515.4
5	Kotia	82.2	283	1075.2
6	Maliput	48	93	555.8
7	Nuagaon	39.4	97	413.4
8	Peturu	158.8	232	1920.6
9	Pottangi	38.8	93	508.6
10	Pukali	156.2	247	2118.4
11	Ralegada	54.8	91	647.2
12	Sambai	125.6	183	1507
13	Sunki	34.4	74	390
14	Talagoluru	75.2	145	918.8
		<b>1070</b>	<b>2136</b>	<b>13068</b>

During the reporting period, millet cultivation was undertaken across 14 GPs, covering a total area of 1070 hectares. A total of 2136 farmers actively participated in the programme, achieving an impressive annual production of 13,068 quintals. This demonstrates the increasing adoption of millet-based farming practices and its growing role in ensuring sustainable livelihoods and nutritional security for farming households.





## ADDRESSING CLIMATE CHANGE

Project	: Climate Change Adaptability [CCA]
Funding Agency	: National Bank for Agriculture and Rural Development (NABARD), Odisha RO, Bhubaneswar [Originated from support by KfW, Germany]
Location	: Turia/ Taupadar Watershed Clusters of Pottangi Block in Koraput District, Odisha

### Description of the Project:

Watershed has been an approach to enhance productivity, quality assurance and most importantly not having to disturb the existing natural systemic balances etc. But it is an approach and it has its limitations. Post the assignment in a project mode, it was felt that; in the light of an emerging global phenomenon, change in climatic conditions, that the farmers, who agriculture dependent should be educated enough to adapt to the climatic change to reinforce their own survival. This programme substantiated this.

LAVS had implemented Livelihoods programme with watershed approach in two watershed clusters: Taupadar and Turia. The CCA programme was allotted to LAVS subject to the condition that LAVS had prima facie experience with the geographic, demography, social aspects of the area.

### Specific information:

Watershed Clusters:	1. Turia [Kandamali]      2. Taupadar [Deomali]
Location	: Pottangi Block of Koraput District, Odisha at a distance of 23 KMs from Pottangi, the block headquarters

Watershed has been an approach to enhance productivity, quality assurance and most importantly not having to disturb the existing natural systemic balances etc. But it is an approach and it has its limitations. Post the assignment in a project mode, it was felt that; in the light of an emerging global phenomenon, change in climatic conditions, that the farmers, who agriculture dependent should be educated enough to adapt to the climatic change to reinforce their own survival.

Throughout the project duration, farmers have been engaged in regular trainings in different formats. Apart from regular training related to adaptation implementation, farmers are also exposed to field visits to gain additional practical knowledge related to existing as well as new practices.. Some of the women farmers trained on Integrated Nutrient Management are also increasingly taking part in teaching other women farmers. A few of them are also engaged in their businesses of selling the products. All these serve as a cross-learning platform for farmers and are enabling scaling out of the technologies and practices to neighbouring areas. The project has specifically focused on enhancing the capacity of lead farmers and Community Resource Persons, who as part of the hub and spoke method, in turn, would impart awareness and knowledge to other members of the community



The project has come up with many insights which helped the organization, community and the other stakeholders of the project to improve their skill and knowledge about the climate change and enhance their adaptive capacity to tackle the climatic risk.

### Activities under the project:

For the year under report this is a roll over one; since last 2 years. It was an attachment to our intervention for watershed program. KfW of Germany supported NABARD to implement the program where watershed programs have been implemented, Thuria (Turia) and Taupadar were among them. Activities were predefined; subject to alterations/ modifications confirming to local requirements. However, in concern of the program implemented in these watershed clusters were:

- ☆ Adaptation of existing measures and implementation of required additional physical measures for soil and water conservation, erosion and degradation control, land reclamation and land improvement on common and private land;
- ☆ Promotion of measures to improve soil quality and soil health, e.g. integrated nutrient management using organic fertilizers, tank silt application, mulching, green leaf application, vermin-composting, promotion of agro-forestry and related soil protection measures;
- ☆ Promotion of sustainable farming, productivity enhancement and natural resource management practices and climate change adaptation measures, e.g. crop diversification, crop intensification, crop water budgeting, micro-drip-irrigation, nutrient enrichment, organic fertilizers and integrated pest management;
- ☆ Implementation of measures to improve nutritional security, like kitchen gardens, backyard poultries or group fisheries, especially in tribal areas;
- ☆ Promotion of livelihood options (on-farm/off-farm), using existing village-level revolving funds, partly topped-up through project funds on a grant basis;
- ☆ On-going capacity building and institution building for above mentioned activities and especially climate change risk, adaptation and mitigation measures through Project Facilitating Agencies;
- ☆ Implementation of a GIS based programme management information system;
- ☆ Systematization and documentation of local experiences and best practices, publications, trainings, policy dissemination as well as workshops, exposure visits, events for knowledge exchange.





## MEGA PLANTATION

During the period under report; Grow-Trees.com and LAVS entered into an agreement implement a plantation program in the foothills of Similipal bio-reserve. The activity was three folded: 1. raising the nursery; 2. plantation in community owned lands and; 3. to protect the plants for a period remaining since plantation till 2 years. The project aimed at planting 3.25 Lakhs plants across Kuliana blocks of Mayurbhanj. Total villages covered under the program were 2 within Chandua Grampanchayat of Kuliana block. Species were selected on the basis of their adaptability to local environment and survival rates.

LAVS hard under taken a plantation programme in two blocks of Mayurbhanj district; Kuliana and Bisoi. LAVS invested its immediate past experience having grown and planted 3 million saplings in the vicinity, foothills of Similipal forest reserve; Bisoi and Shamakhunta. Bisoi was part of this initiative but Kuliana was a novel geography; but with approximate similar climatic, soil texture and topographic features and in the same administrative district; Mayurbhanj. The target was half a million saplings. The table below describes the variety of saplings with numbers planted against the villages covered.

Sl	Block	Village/ Patch	GP	Area	Acacia	Karanja	Saguan	Neem	Sisu	Gambhari	Total
1	Kuliana	Sumaria-A	Chandua	34.0	70168	24200	15300	2000	2000	2000	115668
2	Kuliana	Sumaria-B	Chandua	23.8	58400	10520	12000	0	0	0	80920
3	Kuliana	Dudhkund	Chandua	42.5	110500	19750	10450	0	3550	4500	148750

### Objectives:

1. Make productive use of wasteland by planting suitable species of plants which can be useful in enhancing green coverage of the area
2. Engage community members/ collectives to take care and protect the plantation
3. Take appropriate care of the plantation for a specific period of time and ensure lowest mortality and morbidity
4. Ensuring that the plantation is handed over to the community for management and use of it for their economic development
5. Large scale afforestation to be used as a major impact on climate change, to keep the environment stable and balanced.
6. Large scale afforestation in the proposed area which is located at the foot hills of Similipal reserve forests, shall act as a corridor for migrant elephants
7. Ensure availability of enough food for the migrant elephants.





## PROGRAMME ON DIRECT SEEDED RICE (DSR)

With growing concerns over water scarcity, labor shortages, and climate change, the shift towards sustainable and resource-efficient agricultural practices has never been more urgent. In this context, Direct Seeded Rice (DSR) is emerging as a viable alternative to the conventional puddled transplanting method.

DSR offers multiple benefits – reduced water consumption; lower labor requirements, shorter crop duration, and improved profitability for farmers. By eliminating the need for nursery raising and transplanting, it also minimizes drudgery and operational costs.

However, successful adoption of DSR requires addressing certain challenges, including weed management, soil moisture retention, and access to appropriate machinery. LAVS has been working with farmers to provide training, demonstrations, and technical support to overcome these barriers and promote large-scale adoption of DSR in the region.

This program was awarded to LAVS by The Chief District Agriculture Officer, Koraput. The geographic coverage of the intervention is 3 nos. of villages in 3 GPs of Koraput district.

### Impact Highlights (FY 2024-25)

Water Efficiency	Labor Saving	Profitability
Up to <b>30% less water</b> used vs. puddled transplanting	<b>40–50% reduction</b> in transplanting labor	Reduced input costs & higher net returns
Improved soil structure & moisture retention	Less drudgery, especially for women farmers	Shorter crop cycle for faster harvest
Lower methane emissions	Increased adoption of farm mechanization	Better resource use efficiency

## PROMOTING FPO (PANCHBATMALI FPC)

LAVS promoted one Farmers Producer Organization [FPO] during the year 2017. It is based in Pottangi [Hqrs. of Pottangi block, Koraput]. An FPO is a legally registered entity composed of farmers who, by pooling their resources and produce, collectively improve their bargaining power, access to markets and inputs, and overall profitability. FPOs enable small and marginal farmers to overcome individual limitations by creating economies of scale, leading to better incomes, enhanced access to technology and capital, and more efficient agricultural practices. Presently the FPO is engaged in different developmental activities. Presently it has 906 FPO. of farmers as its primary members.

Panchabatmali Producer Company Limited (PPCL) has been promoted by LAVS as a Farmer Producer Organisation (FPO) under the Shree Anna Abhiyaan. The FPO has been actively involved in aggregation of millet produce from farmers, facilitating procurement, and supporting value chain activities such as cleaning, grading, and processing. It also works towards establishing market linkages and promoting millet-based enterprises, thereby ensuring better income opportunities for farmers and strengthening the millet economy in the project area.

## Major Interventions

- ✧ Farmer's mobilization and collectivization into an economically viable unit.
- ✧ Capacity building and training of BoDs [Board of Directors] on governance and management, accounting and legal compliances, business planning
- ✧ Demonstrations on best agricultures practices for productivity enhancement
- ✧ Facilitation on value chain and product development, packaging, branding and marketing, convergence and partnerships linkages for increased visibility and revenues
- ✧ Promotion of women led FPOs for women empowerment
- ✧ Special focus on visioning, leadership development and enterprise development

## GRADUATING WSHGs

During its activities under different projects/ assignments, LAVS had promoted formation of 186 nos. of women Self Help Groups in its area of operation. Though they were formed and nurtured under the assigned projects, they were nurtured, supplemented and promoted beyond the project/ assignment duration. In total 186 nos. of WSHGs was promoted by LAVS. Operationally, these SHGs have indulged in every basic activities of an SHG; 1. Regular meeting; 2. Depositing weekly/ monthly subscription, 3. Showing repayment behavior etc.

In the process of collectivization and graduating from one level to the upper next, the WSHGs are now Producers Groups (PGs); efforts of LAVS supplemented their own efforts for being self-sustainable. What LAVS did was to give them a handholding support. During the period under report; out of the 186 WSGs; 107 are engaged in local specific IG activities resulting in addition to their household income.

Reflecting on the social impact of grouping, the social status of the members of the WSHG is on enhancement, the members are also regarded now as an active member, not as passive ones. This is an example of real socioeconomic development.

## SOCIAL IMPACT ASSESSMENT STUDIES

During the period under report, LAVS was assigned to undertake two Social Impact Assessment Studies in two areas; one in Mahakalpada block of Kendrapada district and another was in Lakhanpur block of Jharsuguda district. Both were about private land acquisition, the former one related to establishment of industries under land Bank



Scheme under Derabish, Mahakalapara and Marshaghai Tahasil and the later one related to coal mining by Vedanta Aluminum [Vedanta Ltd.].



## NURTURING TODAY'S SAPLINGS FOR TOMORROW'S GREEN BHUBANESWAR

### Project Name : Plantation & Caretaking of Saplings Planted By BMC

Life Academy of Vocational Studies (LAVS) has been awarded this assignment by Bhubaneswar Municipal Corporation (BMC) for its outstanding contribution in Plantation and Caretaking of Saplings, fostering a greener and healthier city. The assignment is related to ward nos. 16, 20, 21, 31, 32 and 33 of BMC.

Beyond plantation, LAVS has ensured the survival and healthy growth of saplings through regular activities such as weeding, cleaning, soil working, application of fertilizers and manures, watering, and installation of tree guards for protection. The team has also undertaken the replacement of dead saplings, pruning, and continuous monitoring to secure maximum survival rates. LAVS's commitment to not only planting trees but also nurturing them into thriving green cover, thereby contributing significantly to the creation of a cleaner, healthier, and more sustainable and eco-friendly Bhubaneswar.

**Different Locations covered under the program are as follows:**

#### Ward No. 16

- Laxmipur Santala School
- XIM Campus
- Bajpayi Nagar / Mayfair Nagar
- Biju Pattnaik College
- Nilachakra Nagar (Sahoo Sahi)
- Nilachakra Nagar (Football Field)

#### Ward No. 20

- Loyola School Front

#### Ward No. 31

- Debraj Bidya Pitha

#### Ward No. 32

- Jharpada Canal Road
- Cremation Ground

#### Ward No. 33

- Jail Area
- Haladi Padia Saralanagar
- Jatri Niwas
- Santi Nagar Canal Road
- Jay Durganagar



Bhubaneswar, Odisha, India  
 79°10'10" E, Jharpada Canal Rd, Jharpada, Bhubaneswar,  
 Odisha 751006, India  
 Lat 20.277103° Long 85.881124°  
 09/11/24 01:44 AM GMT +05:30



## EXTERNAL EVALUATION OF HEALTH PROJECTS UNDER NHM

Life Academy of Vocational Studies (LAVS) has been empanelled by the Odisha State Health & Family Welfare Society (OSH&FWS) under the National Health Mission (NHM), Health & Family Welfare Department, Government of Odisha, to conduct independent evaluation and assessment of NGO-led health projects.

As part of this mandate, LAVS has been entrusted with the external evaluation of the following projects:

### **Maa Gruha Project (Maternity Waiting Homes)**

These facilities provide safe accommodation for expectant mothers from remote and tribal areas, ensuring timely institutional delivery and reducing maternal and infant mortality.

- Maa Gruha Project at CHC, Harbhanga - Boudh District
- Maa Gruha Project at Baliguda - Kandhamal District

### **PHC(N) Management Projects**

The Public Health Centre (New) initiatives strengthen primary health care services through effective NGO management, ensuring improved accessibility and quality of healthcare.

- PHC(N) Management Project at Rahada, Beguniapada Block - Ganjam District
- PHC(N) Management Project at Manitara, Buguda Block - Ganjam District

### **Urban Primary Health Centre (UPHC) Management Projects**

The UPHC model addresses the health needs of urban populations, particularly the poor and vulnerable, through NGO-supported management of health centres.

- UPHC Angul - Angul District
- UPHC Sundargarh - Sundargarh District
- UPHC Mahatabroad - Rourkela, Sundargarh District

Through these evaluations, LAVS has contributed to strengthening transparency, accountability, and performance monitoring of community health initiatives under NHM. The findings and recommendations are expected to further guide policy decisions and improve service delivery for maternal, child, and urban health care in Odisha.





## RESEARCH & EVALUATION

Sl. No.	Name of the Project/ Program	Sponsoring Agency	Status
01	<i>Social Impact Assessment Study for Land Acquisition of 448.7110 Acres of Private Land from Two Villages, Banjari and Kudaloi, under Lakhanpur Tahasil of Jharsuguda District for the "Kuraloi (A) North Coal Mine" in Favor of M/s Vedanta Limited</i>	<i>Nabakrushna Choudhury Center for Development Studies [SIA Unit of GoO]</i>	<i>Ongoing</i>
02	<i>Social Impact Assessment Study for Land Acquisition of 543.3510 Acres of Private Land from Kalagada village under Mahakalapara Tahasil of Kendrapada District for "Identification of land for establishment of industries under land Bank Scheme under Derabish, Mahakalapara and Marshughat Tahasil</i>	<i>Nabakrushna Choudhury Center for Development Studies [SIA Unit of GoO]</i>	<i>Ongoing</i>
03	<i>Plantation at Schools, Colleges, and Other Government &amp; Private Institutions and other facilities/ areas as identified by BMC within its jurisdiction</i>	<i>Bhubaneswar Municipal Corporation (BMC)</i>	<i>Ongoing</i>
04	<i>Rejuvenating Watersheds for Agricultural Resilience through Innovative Development [REWARD]</i>	<i>Directorate of Watersheds &amp; Soil Conservation, GoO</i>	<i>Ongoing</i>
05	<i>Special Programme for promotion of Millets in tribal areas</i>	<i>Odisha Millet Mission [through ATMA, Koraput]</i>	<i>Ongoing</i>
06	<i>Social Impact Assessment Study for Land Acquisition of 3.8355 Acres of Private Land from 2 villages under Sakhigopal Tahasil of Puri District</i>	<i>Nabakrushna Choudhury Center for Development Studies [SIA Unit of GoO]</i>	<i>Complete</i>
07	<i>Plant Cultivation Program in Mayurbhanj district [Ph - II]</i>	<i>EcoNet Assets Pvt. Ltd</i>	<i>Complete</i>
08	<i>Conducting Social Audit of PMAY [Urban]</i>	<i>Odisha Urban Housing Mission, GoO</i>	<i>Complete</i>
09	<i>Social Impact Assessment Study for Land Acquisition at 20 villages of Boudh District</i>	<i>Nabakrushna Choudhury Center for Development Studies [SIA Unit of GoO]</i>	<i>Complete</i>
10	<i>Social Impact Assessment Study for Land Acquisition at Kurlughati Village</i>	<i>NCDS, [SIA Unit of GoO]</i>	<i>Complete</i>
11	<i>Social Impact Assessment Study for Land Acquisition at Patharagadin, Bhubaneswar</i>	<i>NCDS, [SIA Unit of GoO]</i>	<i>Complete</i>
12	<i>Social Impact Assessment Study for Land Acquisition at Kaliapani</i>	<i>NCDS, [SIA Unit of GoO]</i>	<i>Complete</i>
13	<i>Social Impact Assessment Study for Land Acquisition at Jajpur Town</i>	<i>NCDS, [SIA Unit of GoO]</i>	<i>Complete</i>
14	<i>Social Impact Assessment Study for Land Acquisition Barbil</i>	<i>NCDS, [SIA Unit of GoO]</i>	<i>Complete</i>
15	<i>Social Impact Assessment Study for Land Acquisition at Rayagada</i>	<i>NCDS, [SIA Unit of GoO]</i>	<i>Complete</i>
16	<i>Social Impact Assessment Study for Land Acquisition at Naurangpur</i>	<i>NCDS, [SIA Unit of GoO]</i>	<i>Complete</i>
17	<i>Social Impact Assessment Study for Land Acquisition at Jaleswar</i>	<i>NCDS, [SIA Unit of GoO]</i>	<i>Complete</i>
18	<i>Social Impact Assessment Study for Land Acquisition at Kendrapada</i>	<i>NCDS, [SIA Unit of GoO]</i>	<i>Ongoing</i>
19	<i>Impact Assessment of Livelihoods Intervention in OPELIP Areas</i>	<i>Odisha PVTG Empowerment &amp; Livelihoods Programme, GoO</i>	<i>Complete</i>
20	<i>Plant Cultivation Program in Mayurbhanj district [Ph - I]</i>	<i>EcoNet Assets Pvt. Ltd</i>	<i>Complete</i>



21	Preparation of Site Specific Wild Life Conservation Plan [SSWLCP]	Odisha Power Transmission Corpn. Ltd., GoI	Complete
22	Climate Change Adaptability – KfW in Koraput district [Turia WS Cluster]	NABARD, Odisha RO [funded by KfW, Germany]	Complete
23	Climate Change Adaptability – KfW in Koraput district [Taupadar WS Cluster]	NABARD, Odisha RO [funded by KfW, Germany]	Complete
24	Promotion of Farmers Producers Company [FPC]	NABARD, Odisha RO	Concurrent
25	Watershed Development Program[Turia WS Cluster]	NABARD, Odisha RO	Complete
26	Watershed Development Program[Taupadar WS Cluster]	NABARD, Odisha RO	Complete
27	Project Implementation Consultancy: [Community Participation Framework, Environmental Code of Practices & Training of Engineers]	Dept. of Rural Works, GoO	Complete
28	Implementation of Mahila Kisan Sashaktikaran Pariyojana (MKSP)	Ministry of Rural Development, GoI	Complete
29	Implementation of Resettlement Plans for Muchhagaon, Pattamundai and HLC-Range-1 subprojects	Dept. of Water Resources, GoO	Complete
30	Formation and Election of WUA for in Upper Indravati Left Canal Extension System as per PP Act	Dept. of Water Resources, GoO	Complete
31	National Field verification of PRIs for RGPSA awards-Assam, Manipur, Odisha	Ministry of Panchayati Raj, GoI	Complete
32	National Field verification of PRIs for RGPSA awards-Kerala	Ministry of Panchayati Raj, GoI	Complete
33	National Field verification of PRIs for RGPSA awards-West Bengal and Sikkim	Ministry of Panchayati Raj, GoI	Complete
34	Formation and Election of WUA for in Upper Indravati Right Canal Extension System as per PP Act	Dept. of Water Resources, GoO	Complete
35	Survey of identified villages in the TSP areas of Odisha for implementation of solar electrification project	Odisha Renewable Energy Development Agency, GoO	Complete
36	Land Allocation Programme in Koraput district	NABARD, Odisha RO	Complete
37	Left Wing Extremism [LWE] Affected Area Development (SHG – Bank Linkage Programme)	NABARD, Odisha RO	Complete
38	Multi-Disciplinary Support to Pani Panchayats under RKVY	Dept. of Water Resources, GoO	Complete
39	Baseline Survey for Peripheral Development in Balasore District	Indian Oil Corporation Ltd.	Complete
40	Evidence based Media Advocacy on Malnutrition and Stunting Child in Odisha	UNICEF, Odisha State Office	Complete
41	Survey of SCSP Beneficiaries under SCA	OSFDC Ltd., GoO	Complete
42	Urban Health Programme, Jharsuguda	National Health Mission, Odisha	Complete
	Vulnerable Groups Health Programme, Lakhanpur, Jharsuguda	National Health Mission, Odisha	Complete
43	Financial Inclusion Programme for Women Development	NABARD, Odisha RO	Complete
44	Efficacy Study and Evaluation of EDUSAT Programme in Odisha	Orissa Remote Sensing Application Centre, GoO	Complete
45	Verification of Swallow Tube wells	APICOL, GoO	Complete
46	Advocacy Programme on RCH	Dept. of H & FW, GoO	Complete



47	Odisha Community Tank Management Programme	Odisha Community Tank Development & Management Society, GoO	Complete
48	Comprehensive Annual and five-year District Plan	Dept. of Planning & Coordination, GoO	Complete
49	Participatory need assessment and program planning for integrated community development		Complete
50	Targeted Intervention for FSWs/MSMs	Orissa State AIDS Cell, GoO	Complete
51	Advocacy on reproductive health rights in five PACS targeted districts of Odisha	UNICEF [through OVHA, Bhubaneswar]	Complete
52	Intervention at Transit points for control of HIV/AIDS: IEC, Information Kiosks, Health Camps & Counselling	Orissa State AIDS Cell, GoO	Complete
53	Management of VIKASPEDIA portal	Centre for Development of Advanced Computing, Ministry of Electronics and IT, GoI	Complete
54	Project 'Surakhya' [an initiative to promote breast feeding]	UNICEF [through OVHA, Bhubaneswar]	Complete
55	Translation of books on relevant acts/ rules to tribal languages: Awareness and IEC for legal literacy and community empowerment.	STSC Research & Training Institute, GoO	Complete
56	Study of Reproductive and Sexual Behaviour among slum dweller youths in Bhubaneswar.	UNFPA, Bhubaneswar	Complete
57	Study on Economic Prosperity in agriculture through Women centric Enterprises In Odisha.	OXFAM, India	Complete
58	Education Guarantee Scheme in Kendrapada district	Odisha School Education Programme Authority [Formerly OPEPA], GoO	Complete
59	Popularization of herbal plantation	National Afforestation and Eco-Development Board, GoI	Complete
60	Village Development Micro Plan, Jugsaipatna, Bhawanipatna Block, Kalahandi	UNWFP, Odisha	Complete
61	Food for Human Development in Koraput District, Odisha	UNWFP, Odisha	Complete
62	Socio-economic development of indigenous people Thuanul Rampur Block, Kalahandi	UNWFP, Odisha	Complete
63	Village Development Micro Plan, Training, NRM & IGA Activities.	UNWFP, Odisha	Complete
64	SHG Promotion / Micro Credit in Jagatsinghpur, Kalahandi & Koraput	Rashtriya Mahila Kosh, GoI	Complete
65	NRM activities through Food for Work during post cyclone rehabilitation	UNWFP, Odisha	Complete
66	Outcome evaluation of UNDP-supported CBNRM project	RPRC, Forest & Environment Dept., Govt. of Orissa	Complete
67	Vocational Training, Jagatsinghpur IGSSS under FVTF Programme	IGSSS under FVTF Programme	Complete
68	Support to primary students	National Education Group (NEG)	Complete
69	Livelihood Promotion of Poor Marginal Farmers under PC Programme	CAPART, Orissa, Bhubaneswar	Complete



## SUCCESS STORIES

### Shri Trinath Jani: An Innovator in Household Nutrition Farming

Shri Trinath Jani, a smallholder farmer from Kankadahandi village under the REWARD project, owns 1.75 acres of land and traditionally cultivated only paddy. Motivated by project interventions and awareness meetings, he diversified into vegetable cultivation by taking an additional 0.5 acres on lease and grew tomato, brinjal, ridge gourd, pointed gourd, and colocasia. He introduced an innovative practice of inter cropping tomato with brinjal, enabling sequential harvests from the same land. While the primary focus of his cultivation remains ensuring **household nutrition security** rather than market sales, his efforts reflect the project's impact in raising awareness on nutrition, improving dietary diversity, and demonstrating sustainable practices that can be replicated by other smallholder farmers.



#### In his words:

"The lack of vegetable consumption is one of the major reasons for increasing malnutrition. Therefore, cultivating vegetables for family consumption is more important than selling them in the market."

### Case Study: Laxmi Kirsani - Inspiring Women Entrepreneurship

Ms. Laxmi Kirsani of Bodaput, trained in mushroom cultivation under the REWARD programme, transformed a small initiative into a thriving enterprise. Initially trained in 2017, Laxmi revived her skills through the REWARD programme in 2023, which provided training, financial support, and confidence to establish her business despite family and community hesitation. She turned her mushroom cultivation training into a thriving enterprise, inspiring over 60 women to take up income-generating activities and achieve dignity, independence, and financial stability.



Starting with a very small nos of 10 mushroom beds, she gradually expanded to 200 beds, formed a mushroom cluster with three WSHGs, and diversified into seasonal varieties with strong family and peer support. Overcoming social and financial barriers, she is earning ₹1.5 lakh in just three months and inspiring over 60 women to start enterprises like goat rearing, poultry, and fishery under Integrated Farming System approach. The women worked democratically, shared profits equally, maintained transparency, and ensured continuity of work practices that strengthened trust and collective growth.

Laxmi's leadership demonstrates how one woman's initiative can spark collective change, turning SHGs into successful entrepreneurs and setting a model of empowerment for tribal women in the REWARD programme area.

#### In her words:

"Mushroom cultivation taught me that even a small step can change the future of many women in our village"



## FINANCIAL HEALTH [AS OF 31st March 2025]



**PARTHA S MISHRA & CO**  
Chartered Accountants

### INDEPENDENT AUDITOR'S REPORT

Audit Report under section 12 A (b) of the Income Tax Act, 1961, in the case of Charitable or religious trusts / institutions.

We have examined the Balance Sheet of **Life Academy of Vocational Studies (LAVS)** as at 31st March 2025 and the Income & Expenditure Account maintained by the said trust/institution for the year ending on the said date.

We have obtained all the information and explanations, which to the best of our knowledge and belief were necessary for the purposes of the audit. In our opinion, Proper books of account have been kept by the head office and the branches of the above named trust/institution visited by us so far as appear from our examination of the books, and proper returns adequate for the purposes of audit have been received from branches not visited by us subject to the comments given below:

Our opinion and to the best of our information and according to the information given to us the said accounts give a true and fair view-

- 1) In the case of Balance Sheet, of the state of affairs of the above named trust/institution as 31st March, 2025 and
- 2) In the case of Income and Expenditure account, of the Excess of Income over Expenditure of its accounting year ending on 31st March, 2025.

UDIN: 25301929BMJRBM6063

Date: 26/09/2025  
Place: Bhubaneswar



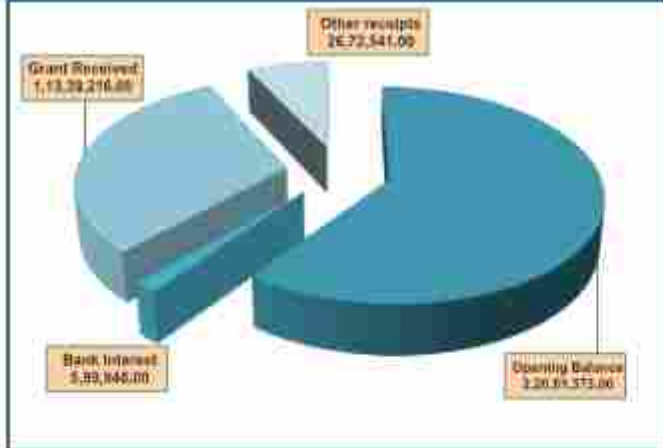
For PARTHA S MISHRA & CO.  
Chartered Accountants

*Sanjaya Kumar Patra*  
CA S.K. Patra (FCA, DISA)  
Partner, M. No- 301929

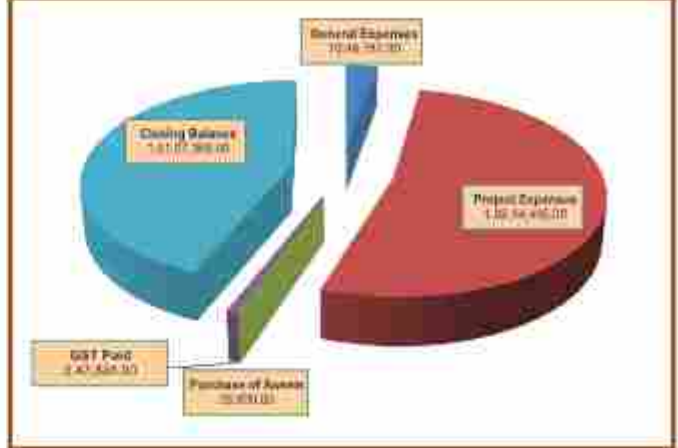
Plot No. GA-140, Ground Floor, Niladri Vihar, Bhubaneswar-751021  
Mob. : 9437044824/9778044824, Email : psmeffiling@gmail.com



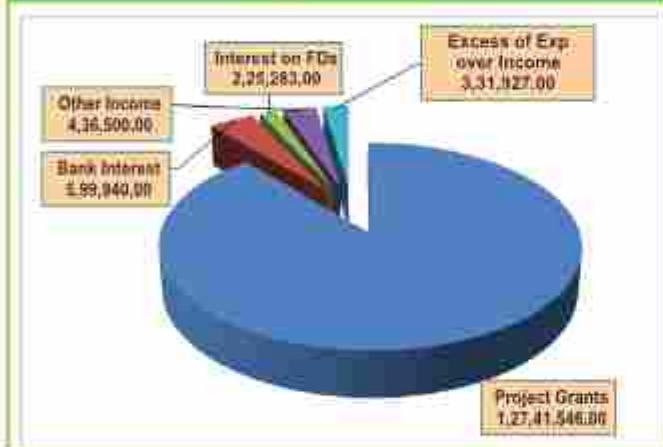
### RECEIPTS



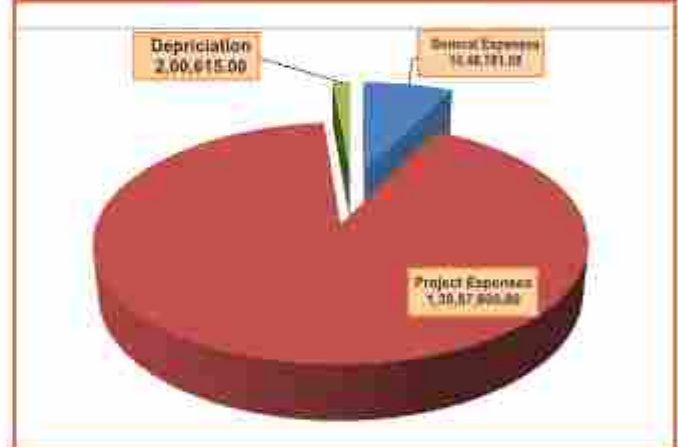
### PAYMENTS



### INCOME



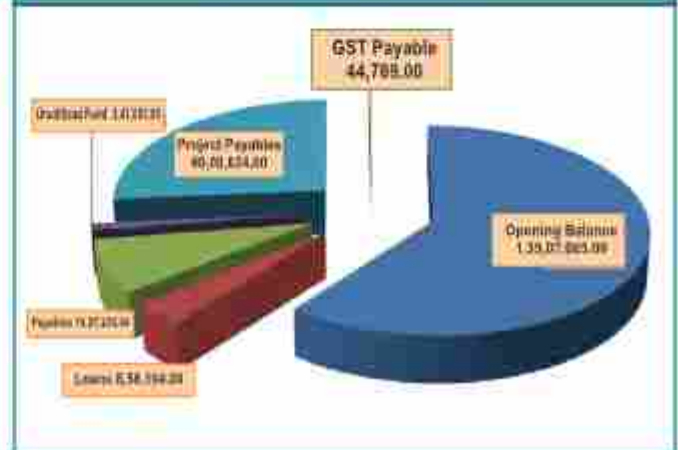
### EXPENDITURE



### ASSETS



### LIABILITIES







# PHOTO GALLERY







Bhubaneswar, Odisha, India  
18°29'48"N, 85°42'41"E, Bhubaneswar, Odisha, India, India  
Lat 20.38441° Long 85.71581°  
07/09/2018 09:40 PM GMT +05:30

Bhubaneswar, Odisha, India  
18°29'48"N, 85°42'41"E, Bhubaneswar, Odisha, India, India  
Lat 20.38441° Long 85.71581°  
07/09/2018 09:40 PM GMT +05:30



## LIFE ACADEMY OF VOCATIONAL STUDIES (LAVS)

17- AV Complex, Gadakana, P.O.: Mancheswar Railway Colony,  
Bhubaneswar-751017, Odisha, India

Tel.: +91 674 - 211 74 75, Cell: +91 9437 96 0808

E-mail: [lavsodisha@gmail.com](mailto:lavsodisha@gmail.com) / [lavsorissa@rediffmail.com](mailto:lavsorissa@rediffmail.com), Website: [www.lavsodisha.org](http://www.lavsodisha.org)